

CASE REPORT

Fatal aluminium phosphide poisoning

Mahesh Chand MEENA, Sachin MITTAL, Yashoda RANI

Forensic Medicine and Toxicology, Lady Hardinge Medical College, New Delhi, India

ITX080215C01 • Received: 04 October 2015 • Revised: 10 January 2015 • Accepted: 14 January 2015

ABSTRACT

Aluminium phosphide (AIP) is a cheap solid fumigant and a highly toxic pesticide which is commonly used for grain preservation. AIP has currently aroused interest with a rising number of cases in the past four decades due to increased use for agricultural and non-agricultural purposes. Its easy availability in the markets has increased also its misuse for committing suicide. Phosphine inhibits cellular oxygen utilization and can induce lipid peroxidation. Poisoning with AIP has often occurred in attempts to commit suicide, and that more often in adults than in teenagers. This is a case of suicidal consumption of aluminium phosphide by a 32-year-old young medical anesthetist. Toxicological analyses detected aluminium phosphide. We believe that free access of celphos tablets in grain markets should be prohibited by law.

KEY WORDS: aluminium phosphide, phosphine, poisoning, suicide

Introduction

Aluminium phosphide (AIP) is a solid fumigant which has been extensively used since the 1940s. In India it is marketed as a tablet of celphos, alphos, quick phos, phostoxin, *etc.* (Chopra *et al.*, 1986). In Iran it is known as the rice tablet (Mehrpour *et al.*, 2010) that can be purchased in local shops.

This highly toxic chemical is cheap and usually formulated in tablets or pellets, granules and as powder. Upon contact with moisture, aluminium phosphide liberates phosphine, which is the active pesticidal component (Sudakin, 2005). Human toxicity, which is usually acute, occurs due to the toxic effects of phosphine released in the stomach after ingestion of aluminium phosphide. Phosphine is widely absorbed from the gastrointestinal tract. It emerges as a poison of suicidal deaths as this pesticide has no effective antidote, is cheap, freely available, and is a 'sure agent of death' (Nagar, 1985, Singh *et al.*, 2003).

In India, this poisoning was not known before 1980. The first case in India was reported in 1981 from M.G.M. Medical College, Indore (Kabra *et al.*, 1988). The incidence of the poisoning has been increasing steadily and is now the commonest mode of suicide in the agricultural community in northern India (Ranga *et al.*, 2004). Overall

mortality in cases of aluminium phosphide poisoning varies between 70–100%. It is higher in those who consume more than two tablets and none of the patients who had ingested more than 3 tablets survived (Siwach *et al.*, 1988, Singh *et al.*, 1985, Raman *et al.* 1985). Suicide was the most common cause of death with 94%, followed by accident with 5% of cases, and homicide accounted for 1% of deaths (Gupta *et al.*, 2006).

In France, aluminium phosphide is used for crop protection and because of its toxicity to humans and domestic animals, the use of AIP is strictly controlled and it cannot be freely supplied.

Case report

This is a case of suicidal consumption of aluminium phosphide by a 32-year-old young medical anesthetist who was under training at a reputed hospital. He visited the walled city and hired a room in a suburb. He was determined to consume the lethal dose but due to the prolonged effect, he survived initially and started vomiting, alerted the hotel staff complaining of an upset stomach and was rushed to hospital. There on arrival he gave his details, fell unconscious and later succumbed to the effects of the poison, which was identified by the remaining unused tablets later recovered from his luggage at the hotel. The reason which was revealed by the investigating officer later was depression as he belonged to a disturbed family with problems that made him take this extreme step.

On *post-mortem* examination, cyanosis was present over the nail bed. On opening the body, fishy or garlicky

Correspondence address:

Dr Mahesh Chand Meena, PhD.

Forensic Medicine and Toxicology,
Lady Hardinge Medical College
110001 - New Delhi, India

TEL.: +91-011-23408158 • E-MAIL: drmahe2012@gmail.com

smell of phosphine gas was present. All the internal organs were congested with petechial hemorrhages. The lungs were congested and edematous with rupture of alveoli, gastrointestinal mucosal congestion (Figure 1), and petechial hemorrhages on the surface of the liver and brain. On toxicological analysis, aluminium phosphide was detected.

Discussion

Aluminium phosphide is marketed in India as tablets of Celphos, Quickphos, *etc.* It is available in small and large packs containing grayish-white tablets weighing about 3 g each, containing 56% aluminium phosphide and 44% aluminium carbonate, capable of releasing 1 g of phosphine.

Following oral ingestion, AIP reacts with water and stomach acid to produce phosphine gas, which may account in large part for its observed toxicity. Phosphine generated in the gastrointestinal tract is readily absorbed into the blood stream. Phosphine may denature or reduce oxyhemoglobin in addition to enzymes important for respiration and metabolism and may also affect cellular membranes. The exact mechanism of action of phosphine is still not clear. Some authors have claimed it to be an inhibitor of cytochrome oxidase in animals (Chefurka *et al.*, 1976), while others showed reduction in catalase activity leading to free-radical toxicity in animals (Bolter *et al.*, 1989) and humans (Chugh *et al.*, 1996).

Symptoms of severe toxicity by AIP ingestion include diarrhea, cyanosis, breathing difficulty, pulmonary edema, respiratory failure, tachycardia, hypotension, dizziness, and death. The most common abnormality seen in the serum of 42% of poisoned patients was hypoxemia with severe metabolic acidosis (Khosla *et al.*, 1992).

Phosphides, like phosphine, are toxic to the central nervous system, which is excited and then depressed. Arora *et al.* in 1995 reported that histopathological

changes revealed varying degrees of congestion, similar to those produced by hypoxic injury. Phosphine was detected in tissues of the brain, liver, and kidneys.

The results of postmortem examinations of victims of phosphine poisoning generally indicate hypoxia with evidence of local trauma in the gastrointestinal tract, liver, kidneys, and central nervous system. The fatal dose of aluminium phosphide was stated to be in the range of 150–500 mg/70 kg by Chugh *et al.* in 1988. The mortality rate in clinical reports is stated to vary between 37–100% by different authors (Chopra *et al.*, 1986; Kabra *et al.*, 1988; Sepaha *et al.*, 1985; Saraswat *et al.*, 1985; Ram *et al.*, 1985; Khosla *et al.*, 1986; Mishra *et al.*, 1989; Chugh *et al.*, 1991, 1992, 1995).

The manner of death was reported to be suicidal in 87% of the cases by Dalbir *et al.* in 1985, 76% in a study by Chugh *et al.* and 100% in Jain *et al.* (2005) with all the cases being suicidal. Garry *et al.* reported in 1993 an accidental death related to phosphine exposure from stored grain fumigated with AIP pellets. The aluminium blood concentration was 713 pg/L, whereas normal laboratory values range from 2 to 42 pg/L. Ten control blood samples from various autopsies showed Al values between 9 and 15 µg/L using emission spectrometry, whereas blood in the deceased contained 100 times more. Similarly to the phosphine results, aluminium concentrations were found to be higher in the brain, adrenals, and liver. In urine and the kidneys, no difference from the usual published values was found, probably because death occurred shortly after ingestion.

Suicide was the most common mode of poisoning deaths, with overall mortality varying between 70–100%. Mortality is higher in those who consume more than two tablets and none of the patients survived who had ingested more than 3 tablets (Siwach *et al.*, 1988; Singh *et al.*, 1985; Raman *et al.* 1985). According to Karamjit *et al.* (2003) the pattern of poisoning varied in urban and rural areas, with a higher incidence of poisoning deaths in rural (64%) than in urban areas (36%). Aluminium phosphide was the most common poison consumed, being responsible for 50% of deaths, followed by insecticides 24% (Gupta *et al.*, 2006). Poisoning deaths increased from 19% in 1996 to 24% in 2005. The age group most commonly affected was 16–25 years (49%). The male to female ratio was 1.9:1.0 and the rural to urban ratio was 1.5:1.0 (Gupta *et al.*, 2006).

Conclusion

Exposure to phosphine gas released from ALP fumigants increases risks of major morbidity and mortality. People handling this fumigant must be aware of its lethal aspects. An important preventive measure lies in better regulated supply of ALP, which otherwise is an excellent and safe fumigant as it leaves little residue on grain. Legislative and administrative measures have been suggested to restrict and modify its supply in India. Unfortunately there has been a failure in their implementation. Except the largest producer of it in India, it has been marketed as granulated

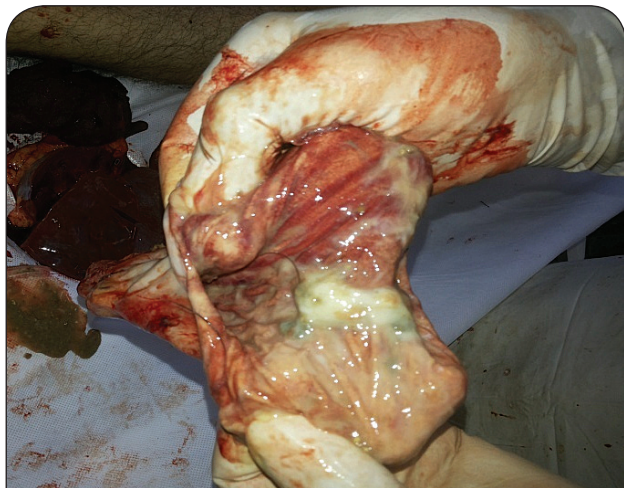


Figure 1. Mucosa of the stomach – congested and hemorrhagic.

powder in 10g plastic sachets. Vendors and shop keepers should not sell the tablets to young people and children without proper verification and confirmation.

REFERENCES

- Arora B, Punia RS, Kalra R, Chugh SN, Arora DR. (1995). Histopathological changes in aluminium phosphide poisoning. *J Indian Med Assoc* **93**(10): 380–381.
- Jain AK, Nigam M, Garg SD, Dubey BP, Arora A. (2005). Aluminium phosphide poisoning – Autopsy findings. *JIAFM* **27**(1): 35–39.
- Bolter C, Chefurka W. (1989). Extra mitochondrial release of hydrogen peroxide from insects and mouse liver mitochondria using respiratory inhibitors--phosphine, nyxothiazol, antimycin and spectral analysis of inhibited cytochromes. *Arch Biochem Biophys* **278**(1): 65–72.
- Chefurka W, Kashi KP, Bond EJ. (1976). The effect of phosphine on electron transport in mitochondria. *Pest Biochem Physiol* **6**: 350–362.
- Chopra JS, Kalra OP, Malik VS, Sharma R, Chandna A (1986): Aluminium phosphide poisoning: a prospective study of 16 cases in one year. *Postgrad Med J* **62**: 1113–1115.
- Chugh SN. (1992). Aluminium phosphide poisoning – present status and management *JAPL* **40**: 401–405.
- Chugh SN. (1995). Aluminium phosphide poisoning with special reference on its diagnosis and management. Review article. *J Ind Assoc Clin Med* **1**: 20–22.
- Chugh SN, Arora V, Sharma A, Chugh K. (1996). Free radical scavengers and lipid peroxidation in acute aluminium phosphide poisoning. *Indian J Med Res* **104**: 190–193.
- Chugh SN, Ram S, Shanna Anjali, Arora BB Saini AS, Malhotra KG. (1988). Adrenocortical involvement in Aluminium phosphide poisoning. *Indian J Med Res* **90**: 289–294.
- Chugh SN, Santram, Mehta L. (1991). Adult respiratory distress syndrome (ARDS) following Aluminium phosphide poisoning. *J Assoc Physician India* **37**: 27.
- Garry VF, Good PF, Manivel JC, Perl DP. (1993). Investigation of a fatality from non occupational aluminium phosphide exposure: measurement of aluminium in tissue and body fluids as a marker of exposure. *J Lab Clin Med* **122**: 739–747.
- Gupta BD, Hapani JH, Shah VN. (2006). Current trend of poisoning in Jamnagar. *J Indian Acad Forensic Med* **28**(3): 90–92.
- Kabra SG, Narayanan R. (1988). Aluminium phosphide: worse than Bhopal. *Lancet* **1**(8598): 1333.
- Karamjit S, Oberoi SS, Bhullar DS. (2003). Poisoning trends in the Malwa region of Punjab. *J Punjab Acad Forensic Med Toxicol* **3**: 26–29.
- Khosla SN, Handa R, Khosla P. (1992). Aluminium phosphide poisoning. *Trop Doct* **22**(4): 155–157.
- Khosla SN, Chugh SN, Nityanand, Saini RS. (1986). Systemic involvement in Aluminium phosphide poisoning. *JAPL* **34**(3): 227–230
- Mehrpour O, Singh S (2010): Rice tablet poisoning: a major concern in Iranian population. *Hum Exp Toxicol* **29**: 701–702.
- Mishra UK, Tripathi AK, Pandey R. (1989). The spectrum of phosphine toxicity in India. *JAPL* **37**: 68.
- Nagar KS. (1985). Aluminium phosphide poisoning. *J Assoc Physicians India* **33**(12): 819–820.
- Raman R, Dubey M. (1985). The electrocardiographic changes in quick phosphide poisoning. *Ind Heart J* **37**(3): 193–195.
- Ranga GS, Dwivedi S, Agarwal M, Kumar D. (2004): Aluminium phosphide poisoning in a young adult: a suicidal cardiotoxin simulating myocardial ischaemia. *J Ind Acad Clin Med* **5**: 369.
- Saraswat PK, Gupta BP, Malhotra VK, Goyal VK. (1985). Prevalence of fatalities due to Aluminium phosphide poisoning in Southern Rajasthan (an epidemiological study). *J Forensic Med Toxicol* **2**: 1–7.
- Sepaha GC, Bharani AK, Jain SM, Raman PG. (1985). Actual aluminium phosphide poisoning. *J Indian Med Assoc* **83**(11): 378–9.
- Singh D, Dewan I, Pandey AN, Tyagi S. (2003): Spectrum of unnatural fatalities in the Chandigarh zone of north-west India – a 25 year autopsy study from a tertiary care hospital. *J Clin Forensic Med* **10**: 145–152.
- Dalbir S, Indarjit D, Vashisht R. (1985). Aluminium phosphide poisoning – autopsy and histopathological findings. *JFMT* **12**(1&2): 16–20.
- Singh S, Dilwari JB, Vashisht R, Malhotra HS, Sharma BK. (1985). Aluminium phosphide ingestion. *British Medical Journal* **40**: 110–111.
- Siwach SB, Yadav DR, Arora B, Dalal S, Jagdish. (1988). Acute aluminium phosphide poisoning – An epidemiological, clinical and histopathological study. *J Assoc Physicians India* **36**(10): 594–596.
- Sudakin DL. (2005). Occupational exposure to aluminium phosphide and phosphine gas? A suspected case report and review of the literature. *Hum Exp Toxicol* **24**: 27–33.