

research article

Differential S-phase progression after irradiation of p53 functional versus non-functional tumour cells

Friedo Zölzer^{1,2}, Tamare Mußfeldt¹, Christian Streffer¹

¹ Institute of Medical Radiobiology, Medical Faculty, University Duisburg-Essen, Germany

² Department of Radiology, Toxicology and Civil Protection, Faculty of Health and Social Studies, University of South Bohemia in České Budějovice, Czech Republic

Radiol Oncol 2014; 48(4): 354-360.

Received 24 April 2014

Accepted 24 July 2014

Correspondence to: Dr. Friedo Zölzer, Department of Radiology, Toxicology and Civil Protection, Faculty of Health and Social Studies, University of South Bohemia in České Budějovice, Emy Destinové 46, 37005 České Budějovice, Czech Republic. E-mail: zoelzer@zsf.jcu.cz

Disclosure: No potential conflicts of interest were disclosed.

Background. Many pathways seem to be involved in the regulation of the intra-S-phase checkpoint after exposure to ionizing radiation, but the role of p53 has proven to be rather elusive. Here we have a closer look at the progression of irradiated cells through S-phase in dependence of their p53 status.

Materials and methods. Three pairs of tumour cell lines were used, each consisting of one p53 functional and one p53 non-functional line. Cells were labelled with bromodeoxyuridine(BrdU) immediately after irradiation, they were then incubated in label-free medium, and at different times afterwards their position within the S-phase was determined by means of flow cytometry.

Results. While in the p53 deficient cells progression through S-phase was slowed significantly over at least a few hours, it was halted for just about an hour in the p53 proficient cells and then proceeded without further delay or even at a slightly accelerated pace.

Conclusions. It is clear from the experiments presented here that p53 does play a role for the progress of cells through the S-phase after X-ray exposure, but the exact mechanisms by which replicon initiation and elongation is controlled in irradiated cells remain to be elucidated.

Key words: x-rays; intra-S-phase checkpoint; flow cytometry, relative movement

Introduction

The crucial importance of the tumour suppressor protein p53 for the regulation of cell cycle progression after irradiation has been known for more than two decades. It was the papers of Kastan *et al.*¹ and Kuerbitz *et al.*² at the beginning of the 1990s that alerted radiation biologists to the fact that the G₁-checkpoint was under the control of p53. The checkpoint itself, *i.e.* a radiation induced block of cell cycle progression before the entry into the S-phase had already been described in 1953 by Howard and Pelc³ for plant cells, and 15 years later by Little⁴ for human cells. Afterwards, the G₁-checkpoint had somewhat fallen into oblivion as in

many tumour cell lines it was not observed, which Kastan's discovery explained by the fact that it required functionality of p53, often lost at later stages of tumour development. Although the capability to halt cell cycle progression for a few hours after irradiation should give cells additional time for repair before entry into the S-phase, a functional p53 does not necessarily convey greater radioresistance.⁵ Other factors, such as the checkpoint control in later phases of the cell cycle, clearly also play a role. There is, however, a clear advantage of cells capable of a G₁-block in terms of how they proceed through the following S-phase: after a few hours of extra repair time cells have no problems completing replication of their previously damaged DNA,

whereas cells incapable of such a halt tend to fail at some point during replication.⁶

Historically, greater attention has been given to the G₂-checkpoint. It was observed first by Howard and Pelc³ in plant cells, and a decade later by Terasima and Tolmach⁷ in human cells. As for a possible role of p53 in controlling this checkpoint, the reports in the literature are somewhat contradictory. Cells deficient in p53 are capable of arresting cell cycle progression before entry into mitosis.¹ We have demonstrated recently that while the accumulation of cells in the G₂-compartment after irradiation can be different in p53 functional and non-functional tumour cell lines, the delay of the G₂-phase itself is completely independent of the p53 status.⁸ Some authors have claimed, however, that manipulation of the p53 expression can have an effect on the G₂-checkpoint.^{9,10} Others have suggested that p53 plays a role in the maintenance of the arrest 2 – 10 hours after radiation.^{11,12} It would seem, therefore, that both p53-dependent and p53-independent pathways play a role.^{13,14} Supposedly, the function of the G₂-checkpoint is to allow for the repair of DNA damage before mitosis. This is in agreement with the observation that abrogation of the block, *e.g.* by high concentrations of caffeine, usually sensitizes cells to radiation^{15,16}, although that does not seem to be the case with all cell types.¹⁷ Again, the interplay of different checkpoints may be of relevance here. Interestingly, although the length of the G₂-phase delay did not correlate with radiation sensitivity as such, the number of unrejoined chromosome breaks was significantly elevated if the checkpoint was attenuated.¹⁸

And finally, regarding the role of p53 in the regulation of S-phase, there does not seem to be a great number of studies directly addressing the issue.¹⁹ Radiation induced delays in the S-phase have been described and their regulation has been analysed since Painter and Young discovered radioresistant DNA synthesis in Ataxia telangiectasia cells in 1980²⁰, but it was not until a decade and a half later that authors began to speak of an S-phase damage checkpoint.^{21,22} This checkpoint seemed to be independent of p53. At least in some cases, however, p53 apparently did have an influence on how and when cells proceeded through replication (see below). Thus, the role of p53 in the regulation of the S-phase checkpoint “seems much more elusive” than its role for the G₁- and G₂-phases and “the details ... are awaiting future studies”, as Fei and El-Deiry stated in their review 2003.²³ That is still true 10 years later.

In general, when one looks at the regulation of S-phase after DNA damage, a rather complex, sometimes confusing picture presents itself. Two checkpoints can be distinguished, one involving stalled replication forks (called the “replication checkpoint”) and another activated by double strand breaks (called the “intra-S-phase checkpoint”).^{24,25} Replication forks can be stalled because of nucleotide starvation or because of inhibition of key replication enzymes, but also by certain types of DNA damage. In all of these cases, patches of single-stranded DNA appear to be the key signal, causing first the activation of ATR, which in turn leads to the phosphorylation of Dbf4 (directly) and Cdc7 (indirectly via activation of Chk1). The thus modified Cdc7/Dbf4 complex is now unable to initiate replication at hitherto unfired origins, but at the same time it protects the integrity of the stalled replication fork.²⁶ Part of this process, namely the phosphorylation of Dbf4, can also be initiated by ATM, which is activated as a consequence of double strand break induction. Dbf4 is thus at the same time one of the components of the “replication checkpoint” and the “intra-S-phase checkpoint”, the latter being also under the influence of three more pathways.²⁷⁻²⁹ The first of these leads from ATM activation to the phosphorylation of Smc1³⁰ and Smc3³¹, associated proteins responsible for the maintenance of chromatin structure. The other two depend on the activation of either Chk1 (by ATR) or Chk2 (by ATM). Both of these checkpoint kinases can either directly phosphorylate Cdc25A, causing its degradation and thus preventing activation of Cdk2, which in turn blocks the formation of the pre-replication complexes and the firing of new origins.^{32,33} Or they can work through p53 which has a number of ways to influence replication: it causes the activation of p21, a nuclear inhibitor of DNA replication^{34,35}; it has an influence on Cdc25A through a factor called ATF3, described as a transcriptional repressor³⁶; it represses the transcription of Cdc25A through p21³⁷, and finally it inhibits Cdk2 through p21 directly.³⁸

In order to clarify how irradiated cells progress through the S-phase in the presence or absence of a functional p53, we compared 6 human tumour cell lines that had earlier been characterized as to their p53 status, their capability to control the G₁-checkpoint and their tendency to fail during S-phase when irradiated in G₁. We labelled cells in S-phase with the help of BrdU and followed their movement through the S- and G₂-phases using a pulse-chase protocol. Clear differences between p53 functional and non-functional cells became ob-

vious in this study, which suggest that the importance of p53 protein for the intra-S checkpoint has to be re-evaluated.

Materials and methods

Cell lines

The following human tumour cell lines were used⁶:

- Be11: A human melanoma cell line originally isolated in Dr. Malaise's laboratory at the Institute Gustave-Roussy, Villejuif, France³⁹; the cells have a DNA index of 1.6 and are only slightly pigmented.
- MeWo: A human melanoma cell line originally isolated by Dr. Fogh's group in the Sloan-Kettering Institute for Cancer Research, New York⁴⁰; the subline used in our institute has a DNA index of 1.6 and is no longer pigmented.
- 4197: A squamous carcinoma cell line derived from a tumour in the lower jaw of a 55-year-old male patient; it was established in 1987 from a biopsy taken at the department of maxillofacial surgery at the University Clinics in Essen; the cells have a DNA index of 1.0.
- 4451: A squamous carcinoma cell line derived from a recurrent tumour in the lower jaw of a 46-year-old male patient; it was established in 1988 from a biopsy taken at the aforementioned department; the cells have a DNA index of 1.5.
- EA14: A human malignant glioma cell line isolated in the Department of Radiotherapy at the University Clinics Essen⁴⁵; the cells have a DNA index of 1.3.
- U87: A human malignant glioma cell line isolated by Ponten and Macintyre at the Wallenberg Laboratory, Uppsala, Sweden; the cells have a DNA index of 1.0.

All six cell lines have been characterized with respect to their p53 status. In our own study of the first four⁴¹, we used a number of indirect methods suggesting that Be11 and 4197 were p53 wild types, but MeWo and 4451 were p53 mutants.⁴¹ Since then, MeWo and 4451 have been confirmed as mutants by direct DNA sequencing.^{42,43} The observation that Be11 and 4197 are p53 wild-types has been corroborated by analysis of their p21 expression after radiation exposure, which is intact.⁴⁴ The latter two cell lines have been studied by others.⁴⁶ Both of them were reported to have a p53 wild-type gene sequence. However, a strong increase of p53 and p21 expression after irradiation was observed only in EA14, whereas U87 showed a much reduced increase in p53 and no increase at

all in p21. We therefore designated Be11, 4197, and EA14 as p53 functional, but MeWo, 4451, and U87 as p53 non-functional.

Culture conditions and treatment

The cells were routinely cultured in Minimal Essential Medium with Eagle's salts, supplemented with 20% fetal calf serum. They were subcultured twice a week and routinely checked for mycoplasma contamination. For the experiments, cells from an exponentially growing culture were seeded into small culture flasks (25 m², 5 ml medium, 250,000 cells). After 24 h, they were exposed to X-rays (Stabilipan' Siemens, 240kV, 0.5mm Cu filter, 15mA, 1Gy/min). All culture flasks, including sham irradiated controls, were taken from the incubator at the same time and kept together while successively treated in the adjacent room.

Two-parameter flow cytometry⁴⁷

Immediately after radiation exposure, 50µl of bromodeoxyuridine (BrdU) solution (1mM) was added to the flasks (final concentration 10µM), and the flasks were incubated for 30 min. The medium was then removed, the flasks washed twice, and the cells were further incubated in the absence of BrdU. Cells were trypsinized at 2 hour intervals (up to 10 hours after irradiation) and fixed in 96% ethanol.

The immunofluorescence staining for flow cytometry analysis has been described in detail elsewhere.⁴⁸ Briefly, cells were incubated in a pepsin solution to isolate nuclei and then in 2 N HCl to partly denature the DNA. They were then incubated with anti-BrdU mouse IgG (Becton Dickinson, 1:20) followed by goat anti-mouse IgG FITC-conjugate (DuPont, 1:100). The DNA was stained with propidium iodide (PI). Green (FITC) and red (PI) fluorescence after 488-nm laser excitation were recorded with a FACScan flow cytometer (Becton Dickinson) and plotted in two-parameter scattergrams. Ten thousand events were recorded; the coefficient of variation of the DNA histograms was about 5%.

Data analysis

Relative movement (RM) values were calculated as the mean DNA fluorescence of the BrdU labelled undivided cells (those that had not yet passed through mitosis, Figure 1) less the DNA fluorescence of the cells in G₁ divided by the difference in DNA fluorescence of the cells in G₁ and G₂.^{47, 49}

$$RM = \frac{F_{lab} - F_{G1}}{F_{G2} - F_{G1}}$$

Each experiment was carried out four times with each cell line. All values given below are means and standard errors of the mean from interexperimental variation.

Results

The pulse-chase method which we employed here allowed us to follow the progression of labelled cells through S-phase in the course of several hours after irradiation. At the time of radiation exposure, S-phase cells were positioned, on average, at about half the distance between the G_1 and G_2 -peaks. They then moved towards the G_2 -peak and after a few hours, having undergone mitosis, began to reappear in G_1 . Earlier research has shown that when the Relative Movement (the mean position of labelled cells between the G_1 and G_2 -peaks) is plotted against time after labelling, it initially increases with a slope of $1/T_s$, where T_s is the duration of S-phase; when the first cells have passed through mitosis, the slope is reduced by a factor of 2.^{47,49} As shown in Figure 2, this was the case for all cell lines in the absence of irradiation. The "break-point" in the curves occurred mostly around 6 h, which is in reasonable agreement with estimates for their transit time through the G_2 - and M-phases.^{8,50} From the increase of the Relative Movement in the first hours after labelling we obtained values for the duration of the unperturbed S-phase between 14 h (MeWo) and 20 h (Be11). Table 1 suggests that there was no obvious connection with the p53 status.

Important differences between p53 functional and non-functional cells were seen, however, after irradiation. In the p53 functional cells, progression through the S-phase was halted for just a short time and then proceeded without further delay or even at a slightly accelerated pace. An initial delay was also seen, for 4197 and EA14, in unirradiated cells, but it was prolonged after radiation exposure. In p53 non-functional cells, on the other hand, progression through the S-phase was significantly slowed down over at least a few hours. In the case of 4451, the slow-down was particularly dramatic, but progression returned to normal after 4 h.

Within the first two pairs of cell lines, the p53 proficient ones were more radioresistant in terms of cell survival, so that it seemed advisable to also employ higher doses with them as compared to the p53 deficient ones (6 Gy for Be11, 8 Gy for 4197 leading

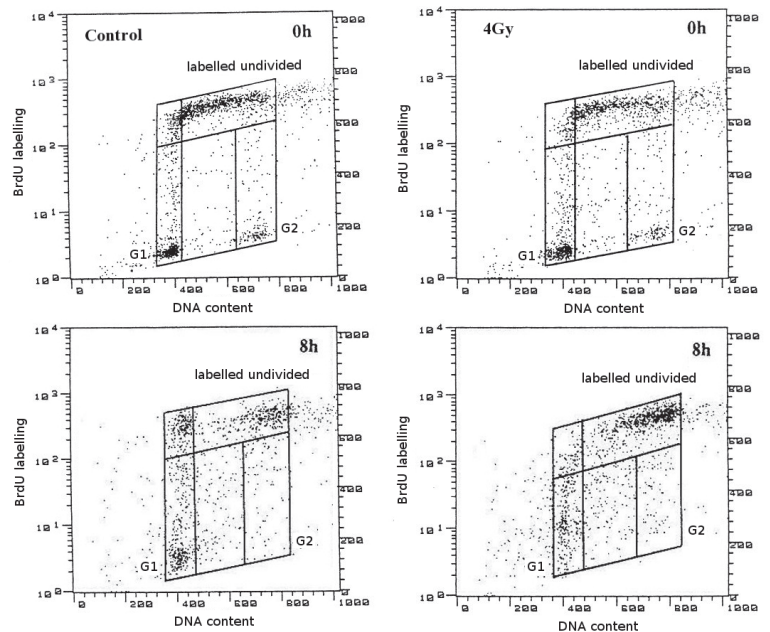


FIGURE 1. Examples of scattergrams of control cultures and cultures exposed to 4 Gy of X-rays, labelled with BrdU and kept in BrdU-free medium for the times indicated (MeWo) (FL1-H: BrdU incorporation (FITC), FL3-H: DNA content (PI))

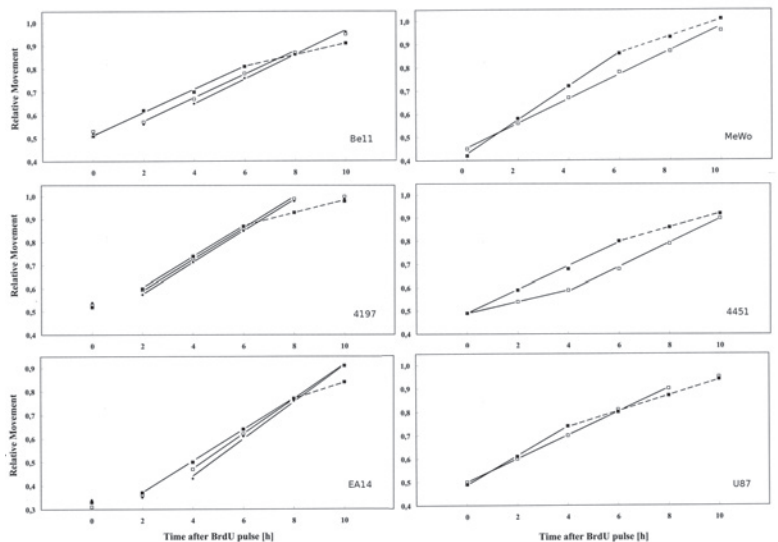


FIGURE 2. "Relative Movement" as a function of time after radiation exposure in p53 functional (Be11, 4197, EA14) and p53 non-functional (MeWo, 4451, U87) cell lines. Error bars omitted for clarity. See Table 1 for means and standard errors of the mean from interexperimental variation. The extensions of the solid lines indicate which data points were included in the regression analysis. The broken lines depict the second, shallower component of the "Relative Movement" curves (see text).

TABLE 1. Duration of S-phase and delay per unit dose calculated from data shown in Figure 2

Cell line	Dose [Gy]	Duration of S-phase [h]		Delay [h/Gy] ^c
Be11	0		20.4 ± 1.6 ^b	
	4	0.8 ± 0.6 ^a +	19.8 ± 2.0 ^b	- 0.15 ± 0.27
	6	1.2 ± 0.6 ^a +	19.4 ± 2.1 ^b	- 0.17 ± 0.18
MeWo	0		13.7 ± 1.1 ^b	
	4		17.5 ± 0.9 ^b	0.95 ± 0.35
4197	0	0.8 ± 0.4 ^a +	15.4 ± 2.6 ^b	
	4	1.0 ± 0.6 ^a +	15.1 ± 2.4 ^b	- 0.08 ± 0.12
	8	1.2 ± 0.8 ^a +	14.8 ± 1.7 ^b	- 0.07 ± 0.08
4451	0		19.6 ± 1.2 ^b	
	4	(0 – 4 h)	40.7 ± 4.5 ^b	5.28 ± 1.36
		(6 – 10 h)	19.2 ± 2.2 ^b	- 0.10 ± 0.23
EA14	0	1.4 ± 0.5 ^a +	14.9 ± 0.4 ^b	
	4	1.9 ± 1.0 ^a +	13.6 ± 1.5 ^b	- 0.33 ± 0.19
	8	2.6 ± 0.4 ^a +	12.6 ± 0.5 ^b	- 0.29 ± 0.09
U87	0		16.0 ± 1.6 ^b	
	4		19.6 ± 1.1 ^b	0.90 ± 0.58

^a The smaller figures are the initial lags immediately after irradiation.

^b The larger figures are the durations of S-phase calculated from the slopes *m* of the "Relative Movement" curves ($T_s = 1/m$)

^c Delays calculated from the slopes *m* of the "Relative Movement" curves ($T_s = 1/m$), i.e. neglecting the initial lags

to the same cell survival as 4 Gy in MeWo and 4415, resp.⁴¹). Not even with these higher doses, however, was their progression through the S-phase (after the initial short delay) significantly reduced. The same was the case with EA14 (where we also applied 8 Gy in spite of it being more radiosensitive than its counterpart U87⁴⁶). We therefore concluded that the absence of a strong radiation effect on S-phase progression in the p53 functional cell lines was real and not due to their different radiosensitivity as compared to the p53 non-functional cell lines.

Discussion

It must be emphasized that any conclusion that may be drawn here about the progression through S-phase in relation to p53 function, is restricted to cells which are in S-phase at the time of irradiation. This is due to the fact that labelling was done immediately after radiation exposure. For MeWo, we have some data from an earlier study where we looked at the Relative Movement of cells labelled 24 or 48 h after irradiation and we could still see a significant slow-down in S-phase at these times,

although the G₂-block had been completely overcome.⁴⁷ No such experiments have been undertaken for any of the other cell lines used in the present investigation.

For cells in S-phase, then, it is clear that a functional p53 suppresses further DNA synthesis for no more than a short period, but permits progression through the S-phase at a normal pace afterwards. In cells that are p53 non-functional, DNA synthesis is slowed down for at least a couple of hours, in two of our three cell lines for the whole duration of the S-phase. Whether the p53 effect is on replicon initiation or on elongation in already initiated replicons is impossible to tell from our data. A complete halt of replication for 1-2 hours in p53 proficient cell lines would suggest that both are affected, but with up to 100 000 origins of replication in a human cell one would probably not notice if elongation in a few already initiated replicons was finished and just the firing of new origins prevented. Indeed, experiments in which the direct block of viral origin by p53 binding was studied after γ -irradiation, it was found that initiation was completely shut down, but elongation continued unabated even though the template must still have been damaged.⁵¹ This agrees with the conclusion of a much earlier study.²⁰

On the other hand, an investigation of the different effects of irradiation on DNA synthesis in normal and Li-Fraumeni fibroblasts clearly showed that in the absence of p53 both initiation and elongation were slowed down.⁵² Although the experiments described in that study focused on overall DNA synthesis and were not designed to distinguish between a slow-down of progression through S-phase and a reduced entry of cells into S-phase, the findings reported seem to be in very good agreement with our data. In normal cells, DNA synthesis was shut down within an hour or two after irradiation, then recovered, and again decreased after about 6 hours. The latter effect was ascribed to less cells entering S-phase because of the G₁-block. In p53-deficient fibroblasts, the initial drop in DNA synthesis was also present, but it lasted longer than in normal cells, recovered more fully and was not followed by a dramatic drop at later times, presumably because cells were not blocked in G₁. Importantly, normal fibroblasts seemed to shut down only initiation, while both initiation and elongation were affected in p53-deficient cells.⁵²

By which mechanism p53 suppresses replicon initiation and by which means both replicon initiation and elongation are suppressed in p53-deficient cells remains to be elucidated. In the introduction,

we have mentioned a number of pathways involved in the intra-S-delay, but it was beyond our possibilities to examine the details of replication control in our cell lines. Nevertheless, the experiments presented here show that p53 does play a role for the progress of cells through the S-phase after X-ray exposure, at least with cells irradiated in S-phase itself.

Acknowledgement

We thank D. Dittmann for excellent technical assistance. Cultivation, irradiation and BrdU labeling of EA14 and U87 were carried out by M. Groneberg in the Radiobiological Laboratory of the Department of Radiotherapy of the University Clinics, Essen; we are grateful to him and to M. Stuschke for making this part of the study possible.

References

- Kastan MB, Onyekwere O, Sidransky D, Vogelstein B, Craig RW. Participation of p53 protein in the cellular response to DNA damage. *Cancer Res* 1991; **51**: 6304-11.
- Kuerbitz SJ, Plunkett BS, Walsh WV, Kastan MB. Wild-type p53 is a cell cycle checkpoint determinant following irradiation. *Proc Natl Acad Sci USA* 1992; **89**: 7491-5.
- Howard A, Pelc SR. Synthesis of deoxyribonucleic acid in normal and irradiated cells and its relation to chromosome breakage. *Heredity* 1953; **6**: 261-73.
- Little JB. Delayed initiation of DNA synthesis in irradiated human diploid cells. *Nature* 1968; **218**: 1064-5.
- Cuddihy AR, Bristow RG. The p53 protein family and radiation sensitivity: Yes or no? *Cancer Met Rev* 2004; **23**: 237-57.
- Zölzer F, Streffer C. Quiescence in S-phase and G₁ arrest induced by irradiation and/or hyperthermia in six human tumour cell lines of different p53 status. *Int J Radiat Biol* 2000; **76**: 717-25.
- Terasima T, Tolmach LJ. Variations in several responses of HeLa cells to x-irradiation during the division cycle. *Biophys J* 1963; **3**: 11-33.
- Zölzer F, Jagetia G, Streffer C. G₂-block after irradiation of cells with different p53 status. *Strahlen Onkol*, June 14 2014. [Epub ahead of print]. doi 10.1007/s00066-014-0690-5
- Agarwal ML, Agarwal A, Taylor WR, Stark GR. p53 controls both the G₂/M and the G₁ cell cycle checkpoints and mediates reversible growth arrest in human fibroblasts. *Proc Natl Acad Sci USA* 1995; **92**: 8493-7.
- Stewart N, Hicks GG, Paraskevas F, Mowat M. Evidence for a second cell cycle block at G₂/M by p53. *Oncogene* 1995; **10**: 109-15.
- Bunz F, Dutriaux A, Lengauer C, Waldman T, Zhou S, Brown JP, et al. Requirement for p53 and p21 to sustain G₂ arrest after DNA damage. *Science* 1998; **282**: 1497-501.
- Solberg Landsverk K, Patzke S, Rein ID, Stokke C, Lyng H, De Angelis PM, Stokke T. Three independent mechanisms for arrest in G₂ after ionizing radiation. *Cell Cycle* 2011; **10**: 819-29.
- Taylor WR, Stark GR. Regulation of the G₂/M transition by p53. *Oncogene* 2001; **20**: 1803-15.
- Stark GR, Taylor WR. Control of the G₂/M transition. *Mol Biotech* 2006; **32**: 227-48.
- Busse PM, Bose SK, Jones RW, Tolmach LJ. The action of caffeine on X-irradiated HeLa cells. III. Enhancement of X-ray-induced killing during G₂ arrest. *Radiat Res* 1978; **76**: 292-307.
- Powell SN, DeFrank JS, Connell P, Eogan M, Preffer F, Dombkowski D, et al. Differential sensitivity of p53(-) and p53(+) cells to caffeine-induced radiosensitization and override of G₂ delay. *Cancer Res* 1995; **55**: 1643-8.
- Musk SR. Reduction of radiation-induced cell cycle blocks by caffeine does not necessarily lead to increased cell killing. *Radiat Res* 1991; **125**: 262-6.
- Schwartz JL, Cowan J, Grdina DJ, Weichselbaum RR. Attenuation of G₂-phase cell cycle checkpoint control is associated with increased frequencies of unrejoined chromosome breaks in human tumor cells. *Radiat Res* 1996; **146**: 139-43.
- Iliakis G, Wang Y, Guan J, Wang H. DNA damage checkpoint control in cells exposed to ionizing radiation. *Oncogene* 2003; **22**: 5834-47.
- Painter RB, Young BR. Radiosensitivity in ataxia-telangiectasia: a new explanation. *Proc Natl Acad Sci USA* 1980; **77**: 7315-7.
- Larner JM, Lee H, Hamlin JL. S phase damage sensing checkpoints in mammalian cells. *Cancer Surv* 1997; **29**: 25-45.
- Morgan SE, Lovly C, Pandita TK, Shiloh Y, Kastan MB. Fragments of ATM which have dominant-negative or complementing activity. *Mol Cell Biol* 1997; **17**: 2020-9.
- Fei P, El-Deiry WS. P53 and radiation responses. *Oncogene* 2003; **22**: 5774-83.
- Bartek J, Lukas C, Lukas J. Checking on DNA damage in S phase. *Nature Rev Mol Cell Biol* 2004; **5**: 792-804.
- Liu WF, Yu SS, Chen GJ, Li YZ. DNA damage checkpoint, damage repair, and genome stability. *Acta Gen Sin* 2006; **33**: 381-90.
- Lee AY, Chiba T, Truong LN, Cheng AN, Do J, Cho MJ, et al. Dbf4 is direct downstream target of ataxia telangiectasia mutated (ATM) and ataxia telangiectasia and Rad3-related (ATR) protein to regulate intra-S-phase checkpoint. *J Biol Chem* 2012; **287**: 2531-43.
- Falck J, Petrini JH, Williams BR, Lukas J, Bartek J. The DNA damage-dependent intra-S phase checkpoint is regulated by parallel pathways. *Nature Gen* 2002; **30**: 290-4.
- Willis N, Rhind N. Regulation of DNA replication by the S-phase DNA damage checkpoint. *Cell Div* 2009; **4**: 13.
- Dai Y, Grant S. New insights into checkpoint kinase 1 in the DNA damage response signaling network. *Clin Cancer Res* 2010; **16**: 376-83.
- Yazdi PT, Wang Y, Zhao S, Patel N, Lee EY, Qin J. SMC1 is a downstream effector in the ATM/NBS1 branch of the human S-phase checkpoint. *Genes Dev* 2002; **16**: 571-82.
- Luo H, Li Y, Mu JJ, Zhang J, Tonaka T, Hamamori Y, et al. Regulation of intra-S phase checkpoint by ionizing radiation (IR)-dependent and IR-independent phosphorylation of SMC3. *J Biol Chem* 2008; **283**: 19176-83.
- Zhou XY, Wang X, Hu B, Guan J, Iliakis G, Wang Y. An ATM-independent S-phase checkpoint response involves CHK1 pathway. *Cancer Res* 2002; **62**: 1598-603.
- Sørensen CS, Syljuåsen RG, Falck J, Schroeder T, Rønnstrand L, Khanna KK, Zhou BB, Bartek J, Lukas J. Chk1 regulates the S phase checkpoint by coupling the physiological turnover and ionizing radiation-induced accelerated proteolysis of Cdc25A. *Cancer Cell* 2003; **3**: 247-58.
- Cho YJ, Liang P. Killin is a p53-regulated nuclear inhibitor of DNA synthesis. *Proc Natl Acad Sci USA* 2008; **105**: 5396-401.
- Cho YJ, Liang P. S-phase-coupled apoptosis in tumor suppression. *Cell Mol Life Sci* 2008; **68**: 1883-96.
- Demidova AR, Aau MY, Zhuang L, Yu Q. Dual regulation of Cdc25A by Chk1 and p53-ATF3 in DNA replication checkpoint control. *J Biol Chem* 2009; **284**: 4132-9.
- Vigneron A, Cherier J, Barré B, Gamelin E, Coqueret O. The cell cycle inhibitor p21waf1 binds to the myc and cdc25A promoters upon DNA damage and induces transcriptional repression. *J Biol Chem* 2006; **281**: 34742-50.
- Zhu Y, Alvarez C, Doll R, Kurata H, Schebye XM, Parry D, Lees E. Intra-S-phase checkpoint activation by direct CDK2 inhibition. *Mol Cell Biol* 2004; **24**: 6268-77.

39. Weininger J, Guichard M, Joly AM, Malaise EP, Lachet B. Radiosensitivity and growth parameters in vitro of three human melanoma cell strains. *Int J Radiat Biol* 1978; **34**: 285-90.
40. Fogh J, Bean MA, Brügggen J, Fogh H, Fogh JM, Hammar SP, et al. Comparison of a human tumor cell line before and after growth in the nude mouse. In: Fogh J, Giovanella B, editors. *The nude mouse in experimental and clinical research*. New York: Academic Press; 1978. p. 215-45.
41. Zölzer F, Hillebrandt S, Streffer C. Radiation induced G₂-block and p53 status in six human cell lines. *Radiother Oncol* 1995; **37**: 20-8.
42. Albino AP, Vidal MJ, McNutt NS, Shea CR, Prieto VG, Nanus DM, et al. Mutation and expression of the p53 gene in human malignant melanoma. *Melanoma Res* 1994; **4**: 35-45.
43. Böhneke A, Westphal F, Schmidt A, El-Awady RA, Dahm-Daphi J. Role of p53 mutations, protein function and DNA damage for the radiosensitivity of human tumour cells. *Int J Radiat Biol* 2004; **80**: 53-63.
44. Binder AB, Serafin AM, Böhm LJ. Abrogation of G(2)/M-phase block enhances the cytotoxicity of daunorubicin, melphalan and cisplatin in TP53 mutant human tumor cells. *Radiat Res* 2000; **154**: 640-9.
45. Stuschke M, Budach V, Sack H. Radioresponsiveness of human glioma, sarcoma, and breast cancer spheroids depends on tumour differentiation. *Int J Radiat Oncol Biol Phys* 1993; **27**: 627-36.
46. Wurm R, Ketel B, Schröder G, Sinn B, Schlenger L, Wolf G, et al. Strahlenempfindlichkeit nach kombination von bestrahlung und koffein. *Strahlenther Onkol* 1997; **173**: 614.
47. Zölzer F, Uma Devi P, Streffer C. Determination of potential doubling times in human melanoma cell cultures subjected to irradiation and/or hyperthermia by flow cytometry. *Radiat Res* 1994; **138**: 451-9.
48. Zölzer F, Streffer C, Pelzer T. Induction of quiescent S-phase cells by irradiation and/or hyperthermia. I. Time and dose dependence. *Int J Radiat Biol* 1993; **63**: 69-76.
49. Begg AC, Moonen L, Hofland I, Dessing M, Bartelink H. Human tumour cell kinetics using a monoclonal antibody against iododeoxyuridine: intratumour sampling variations. *Radiother Oncol* 1988; **11**: 337-47.
50. Zölzer F, Streffer C. G₂-phase delays after irradiation and/or heat treatment as assessed by two-parameter flow cytometry. *Radiat Res* 2001; **155**: 50-6.
51. Zhou J, Prives C. Replication of damaged DNA in vitro is blocked by p53. *Nucl Acid Res* 2003; **31**: 3881-92.
52. Mirzayans R, Aubin RA, Bosnich W, Blattner WA, Paterson MC. Abnormal pattern of post-γ-ray DNA replication in radioresistant fibroblast strains from affected members of a cancer-prone family with Li-Fraumeni syndrome. *Br J Cancer* 1995; **71**: 1221-30.