

# Immune-enhancing activity of potential probiotic strains of *Lactobacillus plantarum* in the common carp (*Cyprinus carpio*) fingerling

Barbara Kazuń<sup>1</sup>, Joanna Małaczewska<sup>2</sup>, Krzysztof Kazuń<sup>1</sup>,  
Joanna Żylińska-Urban<sup>3,4</sup>, Andrzej K. Siwicki<sup>1</sup>

<sup>1</sup>Department of Fish Pathology and Immunology,  
Stanisław Sakowicz Inland Fisheries Institute, 10-719 Olsztyn, Poland

<sup>2</sup>Department of Microbiology and Clinical Immunology, Faculty of Veterinary Medicine,  
University of Warmia and Mazury, 10-719 Olsztyn, Poland

<sup>3</sup>Department of Microbial Biochemistry, Institute of Biochemistry and Biophysics,  
Polish Academy of Sciences, 02-106 Warszawa, Poland

<sup>4</sup>Department of Technology and Biotechnology of Medicines, Faculty of Chemistry,  
Warsaw University of Technology, 00-664 Warszawa, Poland  
k.kazun@infish.com.pl

Received: July 5, 2018

Accepted: November 6, 2018

## Abstract

**Introduction:** Immune-potentiating functions of *Lactobacillus plantarum* strains in the common carp were evaluated. **Material and Methods:** Fourteen days of feeding fish dry diet supplemented with the bacteria provided parameters of non-specific humoral immunity (lysozyme, ceruloplasmin,  $\gamma$ -globulin, total protein levels, and serum bactericidal activity) and cellular immunity (pinocytosis, respiratory burst activity, and potential killing activity of organ phagocytes), as well as the proliferative response of organ lymphocytes stimulated with mitogens. The resistance of fish to infection with *Aeromonas hydrophila* was also determined. **Results:** Dietary supplementation with *L. plantarum* had a substantial influence on the activity of organ phagocytes, especially the potential killing activity of head kidney cells. A significant increase in the proliferative activity of LPS-stimulated B lymphocytes and in the levels of  $\gamma$ -globulins and total protein was observed. The supplemented diet conveyed higher resistance than the control diet as the cumulative fish mortalities after infection with *A. hydrophila* were 65% and 85%, respectively. **Conclusion:** The results indicate that dietary supplementation with *L. plantarum* stimulates the antibacterial resistance of common carp and may reinforce defence against bacterial infections, but further studies need to be conducted.

**Keywords:** common carp, probiotics, *Lactobacillus plantarum*, immune response, disease resistance.

## Introduction

In a time of intensive fish rearing, bacterial diseases are becoming a serious problem in the aquaculture sector, particularly when complicated by increasing bacterial antibiotic resistance. Negative effects of antibiotics on fish, fish consumers, and the environment can be avoided if probiotics are used to protect fish from bacterial infections or, if disease symptoms appear, to serve as a viable alternative to antibiotic therapy. Probiotics can stimulate the immune system, improve resistance to bacterial and parasitic diseases, contribute to more rapid growth of fish and

better feed efficiency by raising digestive system enzymatic activity, and can even improve the quality of water in fish ponds (8, 21). Among probiotic bacteria, lactic acid bacteria (LAB) constitute the most thoroughly investigated group, which includes inter alia Gram-positive bacilli from the *Lactobacillus* genus.

The research was conducted on *Lactobacillus plantarum* strains, which are widespread on plants, fermenting food, and in the digestive tract of humans and animals, including fish. These bacteria can survive in the digestive system, act antagonistically towards pathogenic bacteria, produce compounds which exert antimicrobiological effects, and adhere to the mucous

membrane of the digestive tract, which facilitates their colonisation of and persistent presence in the intestines (12). The previous studies on *L. plantarum* strains confirm that they are able to produce such antimicrobial substances as plantaricin, active towards specific pathogens and to inhibit their growth (5).

Numerous investigations have been reported on the efficacy of administration of *Lactobacillus* spp. bacteria to different commercially cultivated and ornamental fish, for example rainbow trout (*Oncorhynchus mykiss*), turbot (*Scophthalmus maximus*), red sea bream (*Pagrus major*), orange spotted grouper (*Epinephelus coioides*), and basa fish (*Pangasius bocourti*) (7, 19, 26).

Common carp (*Cyprinus carpio*) is one of the most important cultured fish species in Poland, affected by bacterial diseases, particularly ones caused by mesophilous strains of *Aeromonas hydrophila*. Pathogenic changes occur mostly on the fish skin as motile aeromonad infection (MAI) and appear in the form of petechiae, ulcers, abscesses, and even deep lesions penetrating down to the muscle tissue. Less often, these bacteria cause generalised infection termed motile aeromonad septicaemia (MAS), which is accompanied by the fish's emaciation, exophthalmia, and ruffled scales due to the accumulation of liquid in the body cavity. Internal organs are pale with visible petechiae (10).

The purpose of this study was to evaluate the immune-potentiating functions of *L. plantarum* strains in the common carp fingerling after two weeks sustenance with probiotic-supplemented feed, and substantiate or discount the potential for the bacterium to increase resistance of the fish to bacterial infection with *A. hydrophila*.

## Material and Methods

**Experimental fish.** Common carp fingerlings of an average body weight of 45 g originated from the Experimental Fish Farm of the Stanisław Sakowicz Inland Fisheries Institute in Żabieniec, Poland. The fish were healthy, showed no signs of disease (examined through gross examination of samples of fins, skin, and gills), and had no previous history of parasitic infections.

The fish were acclimatised for two weeks prior to the experiment and maintained on a normal diet in one tank. After the acclimation period, the fish were randomly divided into two experimental groups: one fed a diet supplemented with *L. plantarum* (the LAB group) and the other fed a diet without supplementation (the control group). Each group was prepared in triplicate to make six tanks altogether. The tank capacity was 300 L, ~30% of the water was exchanged daily, and each tank contained 40 fish. The physical and chemical characteristics of the water were as

follows: temperature  $18 \pm 0.5^\circ\text{C}$ , pH 7.2, dissolved oxygen concentration  $6.2\text{--}8.0\text{ mg L}^{-1}$ , and ammonia concentration  $0.04\text{--}0.10\text{ mg L}^{-1}$ . Fish were fed three times per day and the daily feed ration equalled 1.5% of body weight. Of the fish in each group, 20 were used in a challenge test and 20 were used to investigate the immune parameters.

**Probiotic bacteria and experimental diets.** The experiments involved five strains of *L. plantarum*: 225/1, 155/1, 211/1B, 226/1, and 274/1, obtained from the Department of Microbial Biochemistry of the Institute of Biochemistry and Biophysics, Polish Academy of Sciences in Warsaw. The strains were isolated from a sample of raw milk produced in the region of Warmia and Mazury, Poland and their phenotypic and genetic characteristics were determined. The ability of the strains to use 49 different sources of carbon was examined by the API 50CHL test (bioMérieux, France) and the data were processed with Apiweb software (bioMérieux). The enzymatic profile and ability of the strains to produce 19 enzymes was also determined by the API Zym test (bioMérieux).

*L. plantarum* strains were characterised for important properties such as ability to grow in the presence of 10% fish bile, tolerance to low pH, and antagonism *in vitro* towards pathogens dangerous for fish such as *Aeromonas salmonicida*, *A. hydrophila*, and *Pseudomonas fluorescens*, therefore meeting the criteria adopted for strains with probiotic properties (12).

The probiotic-supplemented diet (given to the LAB group) was prepared according to a slightly modified method of Harikrishnan *et al.* (11). The cultures of *L. plantarum* strains from overnight growth on de Man, Rogosa, and Sharpe agar (MRS) plates were inoculated into 10 mL volumes of MRS broth incubated at  $29^\circ\text{C}$  for 24 h, then centrifuged at 2,500 g for 20 min at  $4^\circ\text{C}$ , after which the cell pellets were washed twice and resuspended in 0.9% (w/v) saline. Next, the concentration was adjusted to  $10^{10}\text{ cells mL}^{-1}$  using a DR 3900 Hach-Lange spectrophotometer (Hach-Lange, Germany) and the suspension was mixed proportionally to obtain an experimental probiotic mixture of the five strains. The probiotic mixture was stirred thoroughly with 567 g of commercial carp feed (Aller Aqua, Denmark) to achieve a dose of  $\sim 10^8\text{ cells g}^{-1}$  of feed. The modified feed was stored in screw-top glass bottles at room temperature until required. To ensure a high probiotic level in the supplemented feed, fresh diets were prepared on a weekly basis (6). Fish in the control group were supplied with commercial feed only.

**Sample collection.** After 14 days of feeding, the fish were sacrificed with an overdose of anaesthetic (MS-222, Sigma-Aldrich, USA). Blood was collected from the caudal vein and transferred into Eppendorf tubes. Following centrifugation ( $2,000\text{ g}$ , 10 min,  $4^\circ\text{C}$ ), serum was collected and stored at  $-20^\circ\text{C}$  until use. Serum was separated and subjected to lysozyme,

ceruloplasmin, total protein, and total immunoglobulin assays. The bactericidal activity of serum was also evaluated.

**Evaluation of non-specific humoral immunity and biochemical parameters.** The lysozyme activity in the plasma was measured with the turbidimetric assay presented by Siwicki and Anderson (24). The standard used was hen egg white lysozyme (Sigma-Aldrich) and *Micrococcus lysodeikticus* (Sigma-Aldrich) suspension in phosphate buffer.

The ceruloplasmin activity in the plasma was determined according to Siwicki *et al.* (25) modified for micro-methods. The plasma was incubated for 15 min on microplates in acetate buffer containing 0.2% p-phenylenediamine (PPD) (Sigma-Aldrich). After incubation, 140 µL of 0.02% sodium azide solution was added to stop the reaction. The ceruloplasmin activity was measured at 540 nm on the DR 3900 Hach-Lange spectrophotometer (Hach-Lange).

Total serum immunoglobulin levels were measured using the Lowry micro-method modified by Siwicki and Anderson (24). This method first requires precipitation of immunoglobulin out of serum with polyethylene glycol (10,000 kDa).

Total serum protein levels were determined spectrophotometrically according to the colorimetric Lowry micro-method described by Siwicki and Anderson (24).

**Serum bactericidal activity.** Before the tests, fish sera were pooled (four individuals) within the control and LAB groups ( $n = 5$ ). The serum bactericidal activity towards *A. hydrophila* (pathogenic to carp) and *Yersinia ruckeri* (non-pathogenic to carp, but occasionally isolated from healthy fish) was determined using the spectrophotometric method described by Villamil *et al.* (27) with some modifications. In short, equal volumes of serum and bacterial suspension (*A. hydrophila* or *Yersinia ruckeri*, both bacteria adjusted to  $1 \times 10^8$  cells mL<sup>-1</sup>) in PBS were mixed together in sterile Eppendorf tubes and incubated at room temperature for 1 and 3 h. Subsequently, 100 µL of each sample was transferred to wells of a microtiter plate and centrifuged at 200 g for 10 min. The supernatant was removed and 100 µL of MTT (3-(4,5 dimethylthiazol-2-yl)-2,5-diphenyltetrazolium bromide, Sigma-Aldrich) solution (1 mg mL<sup>-1</sup>) in PBS was added to each well. After 15 min in the dark, the optical densities (OD) of samples were measured at 600 nm. Bacterial suspensions mixed with sterile PBS in the ratio 1:1 served as controls. The ODs of samples were compared to the ODs of the controls and expressed as a percentage of surviving bacteria.

**Isolation of carp immune cells.** Before cell isolation, carp head kidneys and spleens were pooled (four organs) within the control and LAB groups ( $n = 5$ ). Following aseptic removal, pooled organs were passed through 100 µm nylon mesh and placed in RPMI-1640 medium with L-glutamin and sodium

bicarbonate (Sigma-Aldrich). Then, the cell suspensions were layered over the Histopaque 1077 density gradient (Sigma-Aldrich) and centrifuged at 400 g for 40 min at 4°C. The interface cells were collected and washed three times in RPMI-1640 medium. The viability of isolated immune cells was evaluated by trypan blue exclusion. Live cells were suspended at a concentration of  $1 \times 10^6$  cells mL<sup>-1</sup> in RPMI-1640 medium supplemented with 10% foetal calf serum and 1% antibiotic-antimycotic solution (both reagents from Sigma-Aldrich), dispensed into 96-well microtiter plates (Nunc, Denmark), and cultured and incubated at 22°C. Samples obtained from each pool were tested in duplicate using the assays described in the following.

### Evaluation of non-specific cellular immunity

**Pinocytosis assay – neutral red uptake (NRU) assay.** The pinocytosis assay was performed using a commercial TOX-4 kit from Sigma-Aldrich, according to the manufacturer's instructions. Following overnight incubation, plates were washed to remove non-adherent cells, then phagocytes were incubated in serum-free medium containing 0.033% of neutral red for 3 h at 22°C in order to allow pinocytosis. Afterwards, cells were washed with PBS and 100 µL of solubilisation solution (1% acetic acid in 50% ethanol) was added to each well. After gentle shaking, the absorbance was measured at a wavelength of 540 nm with 690 nm as a reference wavelength. The results were compared to the OD of the baseline neutral red solution (cell-free wells containing 0.033% neutral red solution in 100 µL of solubilisation solution) and expressed as a percentage of ingested dye.

**Respiratory burst activity (RBA) test.** The metabolic activity of phagocytes was determined by the measurement of the intracellular RBA after stimulation with phorbol myristate acetate (PMA) (Sigma-Aldrich), as described previously (15). Following overnight incubation, the plates were washed to remove non-adherent cells and 100 µL of PMA (1 µg mL<sup>-1</sup>) in 0.1% nitroblue tetrazolium (NBT) (Sigma-Aldrich) solution was added to each well. The mixture was incubated for 60 min at 22°C. Afterwards, supernatants were removed and the reaction was stopped by the addition of absolute ethanol. The formazan produced within the cells was dissolved in 120 µL of 2M KOH and 140 µL of dimethylsulphoxide (DMSO) (POCH, Poland) and the optical density was measured colorimetrically at 620 nm. The results were expressed as stimulation index (SI) values, which were calculated by dividing the mean OD of PMA-stimulated cells by the ODs of control, unstimulated cells.

**Potential killing activity (PKA) test.** The technique described earlier (15) was used to measure the PKA of phagocytes. Adherent cells were mixed with 100 µL of 0.1% NBT solution in PBS, containing

*A. hydrophila* ( $1 \times 10^8$  cells mL<sup>-1</sup>) and incubated for 60 min at 22°C. After incubation, the supernatants were removed and cells were fixed with absolute ethanol. A total of 120 µL of 2M KOH and 140 µL of DMSO were added to each well and the amount of extracted reduced NBT was measured colorimetrically at 620 nm. These results were also expressed as stimulation index values, which were calculated by dividing the mean OD of bacteria-stimulated cells by the ODs of control, unstimulated cells.

**Proliferative response of lymphocytes – MTT reduction assay.** The mitogenic response of carp lymphocytes was determined using the MTT colorimetric assay, described originally by Mosmann (16), with some modifications. Briefly, 100 µL aliquots of head kidney or spleen cell suspensions were cultured for 72 h at 22°C in growth medium containing mitogens: concanavalin A (ConA) as a T-cell mitogen or lipopolysaccharide (LPS) from *Escherichia coli* as a B-cell mitogen (both mitogens in concentrations of 10 µg mL<sup>-1</sup>, from Sigma-Aldrich). Control cells were maintained in RPMI medium without mitogens. Following incubation, 10 µL of MTT solution (10 mg mL<sup>-1</sup>) in PBS was added to each well and the plate was incubated for another 3 h. Then, the supernatants were removed and 100 µL of DMSO was added to each well. The optical density was measured at a wavelength of 570 nm with 640 nm as a reference wavelength using a Sunrise absorbance reader (Tecan, Austria). As in the previously described assays, the results were expressed as stimulation index values, derived from division of the mean OD of mitogen-stimulated cells by the ODs of control, unstimulated cells.

**Challenge test.** *A. hydrophila* originating from the Department of Fish Pathology and Immunology, Inland Fisheries Institute, Poland, and isolated from infected common carp was identified based on the phenotypic and biochemical characteristics, and its cultures were stored at -70°C in tryptic soy broth (TSB) containing 10% glycerol until further use. After two weeks of feeding, 20 fish were collected from each of the probiotic-supplemented and control tanks and distributed into six other tanks for a challenge study. The challenge was performed by intraperitoneally injecting 0.2 mL of *A. hydrophila* suspension ( $1 \times 10^8$  CFU). The challenged fish were kept under observation for two weeks and the dead fish were removed from the tanks and used for bacterial re-isolation. The mortality

was recorded daily and the results are presented as cumulative rates.

**Statistical analysis.** Data were analysed statistically by Student's *t*-test. Evaluation of the results was performed using GraphPadPrism software package (GraphPad Software, USA).

## Results

**Evaluation of non-specific humoral immunity and biochemical parameters.** The serum lysozyme activity and the ceruloplasmin activity were not significantly different between the experimental groups ( $P > 0.05$ ). The gammaglobulin level and total protein level in serum were significantly higher ( $P < 0.05$ ) in the LAB group compared to the control group (Table 1).

**Bactericidal activity of serum.** Serum bactericidal activity against *A. hydrophila* and *Y. ruckerii* was not found in either of the groups. The results showed an increase in the level of live bacteria in the LAB group, and the increase was significant ( $P < 0.05$ ) after 3 h incubation (Fig. 1).

**Evaluation of non-specific cellular immunity.** The probiotic treatment resulted in no significant differences ( $P > 0.05$ ) in the pinocytic activity of spleen or head kidney phagocytes in the groups (Table 2). The respiratory burst activity of spleen and head kidney phagocytes in the LAB group was found not to differ significantly between the LAB and control groups ( $P > 0.05$ ) (Table 2). The potential killing activity of spleen phagocytes was not marked by significant differences ( $P > 0.05$ ) between the LAB and control groups, but the potential killing activity of head kidney phagocytes was significantly higher ( $P < 0.05$ ) in the LAB group compared to the controls (Table 2).

**Proliferative response of lymphocytes – MTT reduction assay.** In the proliferative response of common carp spleen and head kidney lymphocytes, there was found no significant difference between the LAB and control groups ( $P > 0.05$ ) (Table 2). The proliferative response of carp head kidney lymphocytes stimulated by LPS was significantly higher ( $P < 0.05$ ) in the LAB group than in the control group, whereas in the case of lymphocytes isolated from the spleen, there was no significant difference ( $P > 0.05$ ) between the experimental groups (Table 2).

**Table 1.** Humoral-mediated immune parameters in common carp given *L. plantarum* supplemented feed (LAB) or commercial diet (control)

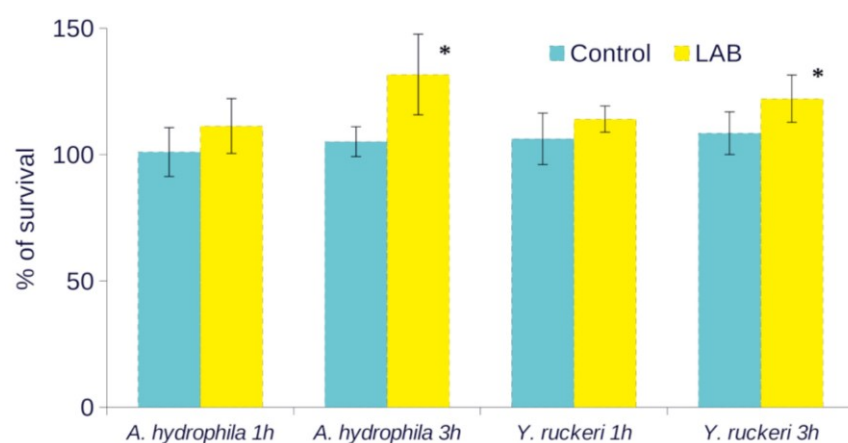
Parameter	Control	LAB
Lysozyme activity in serum (mg L <sup>-1</sup> )	0.73 ± 0.09	0.75 ± 0.07
Ceruloplasmin activity in serum (IU)	46.23 ± 1.94	48.37 ± 3.44
Total protein level in serum (g L <sup>-1</sup> )	25.59 ± 4.84	37.53 ± 5.72*
Total γ-globulin level in serum (g L <sup>-1</sup> )	5.13 ± 1.68	9.95 ± 1.79*

mean ± SD, n = 20, \*mean values were significantly different,  $P < 0.05$

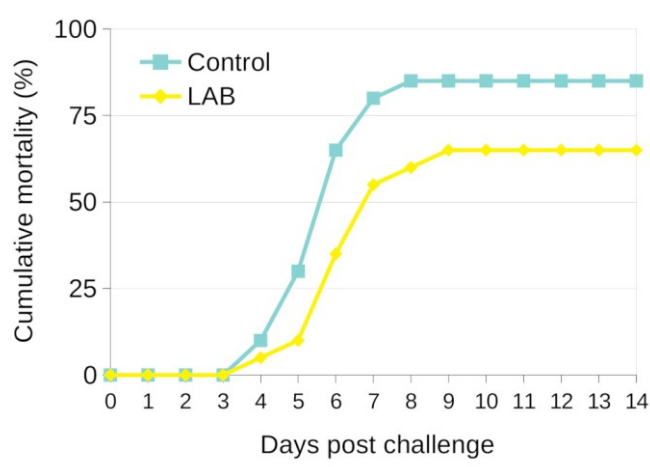
**Table 2.** Cell-mediated immune parameters in common carp fed *L. plantarum* supplemented feed (LAB) or commercial diet (control)

Parameter	Control	LAB
Pinocytic activity of spleen phagocytes (% of ingested NR)	7.78 ± 2.11	10.17 ± 2.36
Pinocytic activity of head kidney phagocytes (% of ingested NR)	52.49 ± 8.36	58.27 ± 9.98
Respiratory burst activity of spleen phagocytes (SI)	1.171 ± 0.152	1.327 ± 0.166
Respiratory burst activity of head kidney phagocytes (SI)	3.45 ± 0.599	3.714 ± 0.379
Potential killing activity of spleen phagocytes (SI)	1.317 ± 0.110	1.392 ± 0.054
Potential killing activity of head kidney phagocytes (SI)	1.675 ± 0.167	2.345 ± 0.369*
Proliferative response of spleen lymphocytes stimulated by ConA (SI)	1.358 ± 0.186	1.445 ± 0.225
Proliferative response of head kidney lymphocytes stimulated by ConA (SI)	1.412 ± 0.164	1.537 ± 0.185
Proliferative response of spleen lymphocytes stimulated by LPS (SI)	1.154 ± 0.130	1.218 ± 0.212
Proliferative response of head kidney lymphocytes stimulated by LPS (SI)	1.216 ± 0.134	1.590 ± 0.204*

mean ±SD, n = 20, \*mean values were significantly different, P < 0.05



**Fig. 1.** Serum bactericidal activity of common carp fingerlings against *A. hydrophila* and *Y. ruckeri* after two weeks of feeding *L. plantarum* strains supplemented (LAB) or non-supplemented (control) diets. Values represent percentages of surviving bacteria and are means with standard deviations represented by vertical bars for five pooled samples. \* Mean values were significantly different, P < 0.05



**Fig. 2.** Effect of two weeks' dietary administration of *L. plantarum* strains (LAB) compared to unsupplemented commercial feed provision (control) on the percentage of post-challenge cumulative mortality of common carp fingerlings after intraperitoneal injection of pathogenic *A. hydrophila*

**Challenge test.** The dietary supplementation with *L. plantarum* led to mortality reduction after challenge with *A. hydrophila* (Fig. 2). A dramatic rise in mortality of common carp fingerlings infected with *A. hydrophila* occurred on days 5 to 7 post-challenge. In particular, the fish fed the probiotic-supplemented diet (the LAB group) seemed to have higher resistance than the fish fed the control diet (control group), and the cumulative mortality in the groups reached 65% and 85%, respectively. Typical symptoms of haemorrhagic septicaemia were observed in moribund or dead fish. Colonies of *A. hydrophila* were isolated from dead fish.

## Discussion

This research is an effort to stimulate the resistance in common carp, a commercially important fish species in Poland and the whole of Europe. Bacterial diseases are the main threat to carp aquaculture, particularly to carp fingerlings. Pathogenic lesions are most often the source of isolates of *A. hydrophila*, which cause infections in immunocompromised fish. Infections are most common after the wintering period when the fish's energy reserves are depleted, or when fish are under stress (during catching, sorting, and transport). Other factors predisposing to disease are high water temperature fluctuations, oxygen deficit, and an increase in the level of nitrogen compounds.

Previous studies carried out on Cyprinidae such as roho labeo (*Labeo rohita*) and catla (*Catla catla*) demonstrated that administration of probiotics to fish favours an improvement in such immunological parameters as lysozyme activity, total protein content, and activity of RBA. Additionally, it improves the resistance of fish to infections with the bacteria *A. hydrophila*, *Edwardsiella tarda*, *Vibrio parahaemolyticus*, and *Vibrio harveyi* (6, 8). It is known that the protective role of probiotics arises from the modulation of the activity of gut-associated lymphoid tissues (GALT), and most studies on the immunostimulant action of probiotics in fish focus on the evaluation of non-specific resistance parameters (4). The reason is the phylogenetic position of fish. The specific immunological response of exothermic animals occurs at a much slower rate and is less important than in endotherms. The non-specific immunity factors act rapidly and effectively in a broader range of temperatures, while lymphocytes are more efficient at higher temperatures (14).

Among the analysed mechanisms of non-specific humoral immunity, the bacteria tested in this study had a beneficial effect only on the levels of immunoglobulins and total protein in serum, having no influence on the activity of lysozyme. Lysozyme is produced by phagocytic cells, including macrophages and neutrophils, and is a protein substance with enzymatic properties, which can decompose the cell

wall mainly of gram-positive bacteria, and lysozyme is a component of non-specific humoral immunity. In our study, we did not observe differences in the activity of lysozyme in serum from group of fish fed the *Lactobacillus* supplemented feed and the control group. In other investigations, no significant differences were found in the activity of lysozyme attributable to probiotic feeds in such fish as brown trout (*Salmo trutta*) or rainbow trout (2, 3, 20) and such supplementation may even lead to depressed lysozyme activity (8).

Total protein is composed of all blood protein fractions (albumins, fibrinogen, immunoglobulins, and lysozyme) and is an important indicator of the physiological condition as well as a reflection of the potential of the innate resistance of an organism. In our investigations, we observed an increase in the total protein level in the group provided with a feed supplemented with *Lactobacillus* following 14 days of treatment. Al-Dohail *et al.* (1) detected a similar response in North African catfish (*Clarias gariepinus*) receiving a feed supplemented with *Lactobacillus acidophilus*. A similar effect was achieved also when rainbow trout, catla, and roho labeo were maintained on a feed with addition of *Bacillus* spp. bacteria (6, 17, 18).

The fish serum contains natural immunoglobulins, which protect an organism until the constituents of specific humoral immunity develop. The polyreactivities of the immunoglobulins enable them to react with the broad spectrum of antigens simultaneously and protect against them. In this study, the level of immunoglobulins was found to be nearly twice as high in the probiotic supplemented group as in the controls. Balcázar *et al.* (2) demonstrated an increase in the concentration of immunoglobulins in rainbow trout serum after administration of lactic acid bacteria, although the difference relative to the control was not significant. An elevated level of immunoglobulins has also been described in African catfish, rainbow trout, and roho labeo (1, 19); however, there are reports suggesting that the elevated level of immunoglobulins is only a transient effect associated with the administration of probiotics (8).

An important contributor to anti-bacterial immunity is the bactericidal activity of serum, distinguished by the rapid kinetics of immunological responses. This type of immunity has a multi-factorial nature and depends on the activity of lysozyme, the complement system and natural immunoglobulins as well as the properties of a given microorganism. In our study, we did not observe any bactericidal activity of serum in either the *L. plantarum*-supplemented or the control group against the pathogenic bacteria *A. hydrophila* or *Y. ruckeri*. These pathogenic bacteria were characterised by high resistance to the activity of common carp serum. Most Gram-negative bacteria are unaffected by lysozyme owing to the outer membrane which encapsulates their cells. In addition,

*A. hydrophila* and *Y. ruckeri* are characterised by high variability of surface antigens, which aids their defence against the bactericidal action of serum. We determined a higher survivability of the analysed bacteria in the serum sampled from the fish fed the diet supplemented with *L. plantarum*, despite its higher level of immunoglobulins, which may be associated with a higher level of total protein in serum and suggest serum to be a more valuable substrate for multiplying bacteria. Other studies, however, have demonstrated the bactericidal activity of serum of roho labeo fed *B. subtilis* against the bacteria *A. hydrophila* (13).

It has been found that probiotics affect the cellular mechanisms of non-specific defence of an organism by stimulating the activity of phagocytic cells (monocytes/macrophages and neutrophils), serving as the first line of defence. These cells also stimulate the development of specific immunity, and a necessary condition underlying their efficient functioning is the proper course of metabolic transformations. The intracellular process of killing microorganisms is accompanied by the activation of several enzymes, which leads to the generation of reactive forms of oxygen and nitrogen.

The considerable increase in the PKA of phagocytes originating from the head kidney after stimulation with *A. hydrophila* evidenced in this study, may indicate an improved antibacterial defence in animals which receive the tested strains of bacteria in their feed. Elevated bactericidal activity of macrophages has also been observed in rainbow trout after feed supplementation with *Kocuria* SM1 and *B. subtilis* (18, 23). Another observation made in the current study was no increase in the ability of the head kidney phagocytes to undergo respiratory burst. However, scientific reports on this subject are frequently equivocal. There are studies implicating that application of probiotics does not have a significant influence on the metabolic activity of neutrophils and monocytes (17), while other investigations, carried out in both *in vitro* and *in vivo* conditions, point to a considerable elevation in RBA in many aquatic animals, including fish (8, 9, 19, 23, 26). Giri *et al.* (8) showed that the metabolic activity of phagocytes derived from the head kidney of roho labeo was significantly increased after 30 days of feeding the fish *L. plantarum* at a dose of  $10^{10}$  CFU g<sup>-1</sup>, while in the fish receiving a dose of  $10^8$  CFU g<sup>-1</sup> of the bacteria, the same parameter peaked after 60 days. Increased metabolic activity of phagocytes from the head kidney after PMA stimulation was also found in groupers following supplementation with *L. plantarum* (26) as well as in the fry of common carp fed *Paenibacillus polymyxa* (9). The differences in obtained results were possibly caused by the shorter period of feeding of common carp fingerling with the probiotic supplement in our study.

An increase in pinocytic activity is considered one of the most distinguishing features of macrophage

activation. This increase in pinocytic activity (ability to absorb micromolecular particles of neutral red) of head kidney and spleen phagocytes was not observed in this study, which agrees with the results obtained by Pieters *et al.* (21) in rainbow trout maintained on a feed with *A. sobria* and *Brochothrix thermosphacta*.

Relatively little attention has been paid in the available literature to the influence of probiotics on fish lymphocytes, and the few references mostly discuss the issue in the context of production of selected cytokines (3). To the best of our knowledge, no studies have been completed that would evaluate the influence of probiotic bacteria on the proliferative response of fish lymphocytes. However, since quite numerous investigations on a mouse model implicate the modulating effect of probiotics on the mitogenic response of lymphocytes, we decided to determine this parameter as well.

In common carp fingerling fed the *L. plantarum* supplemented diet for 14 days, the proliferative activity of B lymphocytes stimulated with bacterial LPS was found to have increased significantly. A similar proliferative effect of various *L. plantarum* strains on the spleen lymphocytes in mice was previously described by Ren *et al.* (22). In a study by Bujalance *et al.* (4), this bacterium did not increase the proliferation of spleen B lymphocytes in healthy mice, but had an immunocorrective effect in immunocompromised animals, raising the inhibited proliferative response of B cells to LPS considerably. The humoral type of immune response prevails in the specific response of an organism to bacterial infections. This response is conditioned by the function of B lymphocytes and their production of antibodies, which bind and neutralise the antigen as well as activate several mechanisms leading to the pathogen removal. Thus, the effect observed in our research may suggest indirectly that *L. plantarum* has a stimulating influence not only on the non-specific but also on the specific antibacterial response in common carp.

Our investigations have also shown that dietary supplementation with *L. plantarum* lowers the mortality rate among common carp fingerlings infected with *A. hydrophila*. Harikrishnan *et al.* (11) observed a similar tendency and Giri *et al.* (8) determined the highest survival rate among roho labeo after infection with *A. hydrophila* in a group of fish fed a diet containing  $10^8$  CFU g<sup>-1</sup> *L. plantarum*. Such enhancement in fish disease resistance can be due to the increase in immune factors and the antagonistic activity of *L. plantarum* towards bacterial pathogens (12).

The results of our research suggest that supplementation of a diet with *L. plantarum* stimulates antibacterial resistance in common carp and can be an efficient measure in the defence against bacterial infections. Administration of probiotic bacteria may help to improve the health of fish and be an alternative prophylactic approach, which inhibits the multiplication of pathogens while stimulating the host

organism by raising its resistance to bacterial infections. However, the obtained results of this study suggest that there is a need to continue the research under conditions prevailing in the natural environment and on the fish farm.

**Conflict of Interests Statement:** The authors declare that there is no conflict of interests regarding the publication of this article.

**Financial Disclosure Statement:** This study was supported by the S-004 Project of the Stanislaw Sakowicz Inland Fisheries Institute, Olsztyn, Poland, and did not receive any specific grant from funding agencies in the public, commercial or not-for-profit sectors.

**Animal Rights Statement:** The research was in compliance with Polish animal welfare regulations and approved by the Local Ethics Committee for Animal Experimentation of the Stanislaw Sakowicz Inland Fisheries Institute in Olsztyn, Poland.

## References

- Al-Dohail M.A., Hashim R., Aliyu-Paiko M.: Evaluating the use of *Lactobacillus acidophilus* as a biocontrol agent against common pathogenic bacteria and the effects on the haematology parameters and histopathology in African catfish *Clarias gariepinus* juveniles. *Aquac Res* 2011, 42, 196–209.
- Balcázar J.L., de Blas I., Ruiz-Zarzuela I., Vendell D., Calvo A.C., Marquez I., Gironés O., Muzquiz J.L.: Changes in intestinal microbiota and humoral immune response following probiotic administration in brown trout (*Salmo trutta*). *Brit J Nutr* 2007, 97, 522–527.
- Banerjee G., Ray A.K.: The advancement of probiotics research and its application in fish farming industries. *Res Vet Sci* 2017, 115, 66–77.
- Bujalance C., Moreno E., Jimenez-Valera M., Ruiz-Bravo A.: A probiotic strain of *Lactobacillus plantarum* stimulates lymphocyte responses in immunologically intact and immunocompromised mice. *Int J Food Microbiol* 2007, 113, 28–34.
- Cebeci A., Gurakan C.: Properties of potential probiotic *Lactobacillus plantarum* strains. *Food Microbiol* 2003, 20, 511–518.
- Das A., Nakhro K., Chowdhury S., Kamilya D.: Effects of potential probiotic *Bacillus amyloliquifaciens* FPTB16 on systemic and cutaneous mucosal immune responses and disease resistance of catla (*Catla catla*). *Fish Shellfish Immunol* 2013, 35, 1547–1553.
- Dawood M.A.O., Koshio S., Ishikawa M., Yokoyama S.: Effects of heat killed *Lactobacillus plantarum* (LP20) supplemental diets on growth performance, stress resistance, and immune response of red sea bream, *Pagrus major*. *Aquaculture* 2015, 442, 29–36.
- Giri S.S., Sukumaran V., Oviya M.: Potential probiotic *Lactobacillus plantarum* VSG3 improves the growth, immunity, and disease resistance of tropical freshwater fish, *Labeo rohita*. *Fish Shellfish Immunol* 2013, 34, 660–666.
- Gupta A., Gupta P., Dhawan A.: Dietary supplementation of probiotics affects growth, immune response and disease resistance of *Cyprinus carpio* fry. *Fish Shellfish Immunol* 2014, 41, 113–119.
- Guz L., Kozińska A.: Antibiotic susceptibility of *Aeromonas hydrophila* and *A. sobria* isolated from farmed carp (*Cyprinus carpio*). *Bull Vet Inst Pulawy* 2004, 48, 391–395.
- Harikrishnan R., Balasundaram C., Heo M.S.: Potential use of probiotic- and triherbal extract-enriched diets to control *Aeromonas hydrophila* infection in carp. *Dis Aquat Organ* 2010, 92, 41–49.
- Kazuń B., Kazuń K., Żylińska J., Siwicki A.K.: *In vitro* study of *Lactobacillus plantarum* properties as a potential probiotic strain and an alternative method to antibiotic treatment of fish. *Fish Aquat Life* 2018, 26, 49–57.
- Kumar R., Mukherjee S.C., Ranjan R., Nayak S.K.: Enhanced innate immune parameters in *Labeo rohita* (Ham.) following oral administration of *Bacillus subtilis*. *Fish Shellfish Immunol* 2008, 24, 168–172.
- Magnadóttir B.: Innate immunity of fish (overview). *Fish Shellfish Immunol* 2006, 20, 137–151.
- Malaczewska J., Siwicki A.K.: The *in vitro* effect of commercially available noble metal nanocolloids on the rainbow trout (*Oncorhynchus mykiss*) leukocyte and splenocyte activity. *Pol J Vet Sci* 2013, 16, 77–84.
- Mosmann T.: Rapid colorimetric assay for cellular growth and survival: application to proliferation and cytotoxicity assays. *J Immunol Methods* 1983, 65, 55–63.
- Nayak S.K., Swain P., Mukherjee S.C.: Effect of dietary supplementation of probiotic and vitamin C on the immune response of Indian major carp, *Labeo rohita* (Ham.). *Fish Shellfish Immunol* 2007, 23, 892–896.
- Newaj-Fyzul A., Adesiyun A.A., Mutani A., Ramsabag A., Brunt J., Austin B.: *Bacillus subtilis* AB1 controls *Aeromonas* infection in rainbow trout (*Oncorhynchus mykiss*, Walbaum). *J Appl Microbiol* 2007, 103, 1699–1706.
- Nikoskelainen S., Ouwehand A., Bylund G., Salminen S., Lilius E.M.: Immune enhancement in rainbow trout (*Oncorhynchus mykiss*) by potential probiotic bacteria (*Lactobacillus rhamnosus*). *Fish Shellfish Immunol* 2003, 15, 443–452.
- Panigrahi A., Kiron V., Puangkaew J., Kobayashi T., Satoh S., Sugita H.: The viability of probiotic bacteria as a factor influencing the immune response in rainbow trout *Oncorhynchus mykiss*. *Aquaculture* 2005, 243, 241–254.
- Pieters N., Brunt J., Austin B., Lyndon A.R.: Efficacy of in-feed probiotics against *Aeromonas bestiarum* and *Ichthyophthirius multifiliis* skin infections in rainbow trout (*Oncorhynchus mykiss*, Walbaum). *J Appl Microbiol* 2008, 105, 723–732.
- Ren D., Li C., Qin Y., Yin R., Du S., Liu H., Zhang Y., Wang C., Rong F., Jin N.: Evaluation of immunomodulatory activity of two potential probiotic *Lactobacillus* strains by *in vivo* tests. *Anaerobe* 2015, 35, 22–27.
- Sharifuzzaman S.M., Austin B.: Development of protection in rainbow trout (*Oncorhynchus mykiss*, Walbaum) to *Vibrio anguillarum* following use of the probiotic Kocuria SM1. *Fish Shellfish Immunol* 2010, 29, 212–216.
- Siwicki A.K., Anderson D.P.: Immunostimulation in fish: measuring the effects of stimulants by serological and immunological methods. *USFWS, IFI, Olsztyn* 1993, 1–17.
- Siwicki A.K., Zakęs Z., Trapkowska S., Terech-Majewska E., Czerniak S., Głabski E., Kazuń K.: Nonspecific cellular and humoral defence mechanisms in pikeperch (*Sander lucioperca*) grown in an intensive system of culture. *Arch Pol Fish* 2003, 11, 207–212.
- Son V.M., Chang C.C., Wu M.C., Guu Y.K., Chiu C.H., Cheng W.: Dietary administration of the probiotic, *Lactobacillus plantarum*, enhanced the growth, innate immune responses, and disease resistance of the grouper *Epinephelus coioides*. *Fish Shellfish Immunol* 2009, 26, 691–698.
- Villamil L., Figueras A., Novoa B.: Immunomodulatory effects of nisin in turbot (*Scophthalmus maximus* L.). *Fish Shellfish Immunol* 2003, 14, 157–169.