

ORIGINAL ARTICLE

Melatonin protects uterus and oviduct exposed to nicotine in mice

Seyedeh Nazanin SEYED SAADAT¹, Fahimeh MOHAMMADGHASEMI², Sina KHAJEH JAHROMI¹,
Mohammad Amin HOMAFAR¹, Mostafa HAGHIRI³

¹ Student Research Committee Office, Guilan University of Medical Sciences, Rasht, Iran

² Cellular & Molecular Research Center, Faculty of Medicine, Guilan University of Medical Sciences, Rasht, Iran

³ Faculty of Medicine, Guilan University of Medical Sciences, Rasht, Iran

ITX070114A07 • Received: 13 December 2013 • Revised: 25 March 2014 • Accepted: 28 March 2014

ABSTRACT

Smoking is associated with higher infertility risk. The aim of this study was to evaluate protective effects of melatonin on the uterus and oviduct in mice exposed to nicotine. Adult female mice (n=32) were divided into four groups. Group A: control animals received normal saline, Group B: injected with nicotine 40 µg/kg, Group C: injected with melatonin 10 µg, Group D: injected with nicotine 40 µg/kg and melatonin 10 µg. All animals were treated over 15 days intraperitoneally. On the 16th day, animals in the estrus phase were dissected and their uterus and oviducts were removed. Immunohistochemistry was recruited for studying apoptosis and for detection of estrogen receptor (ER) alpha in luminal epithelium of the uterus and oviduct. Enzyme-linked immunosorbent assay was used for serum estradiol level determination. Nicotine in group B decreased estradiol level and ERalpha numbers both in the uterus and oviduct ($p<0.05$). Co-administration of melatonin-nicotine in Group D ameliorated the histology of the uterus and oviduct, increased ERalpha numbers and reduced apoptosis in the uterus and oviduct compared with the nicotine Group B ($p<0.05$). This study indicates that nicotine impairs the histology of the uterus and oviduct and co-administration of melatonin-nicotine ameliorates these findings, partly through alteration in ERalpha numbers and reduction of apoptosis.

KEY WORDS: nicotine; melatonin; uterus; oviduct; estrogen receptor

Introduction

Cigarette smoking is associated with reproductive life impairment, such as earlier onset of menopause, higher infertility risk, lower fecundity rate and lower in vitro fertilization (IVF) success rate (Dechanet *et al.*, 2011).

Nicotine is considered one of the most important components of cigarette smoke. Several studies have reported effects of nicotine on the endometrium and myometrium (Dechanet *et al.*, 2011). Nicotine impairs fertility, reduces uterus weight, endometrial and myometrial thickness (Tuttle *et al.*, 2009) with a direct effect on the morphology of ovaries and estradiol levels in rats (Sanders *et al.*, 2002) or mice (Mohammadghasemi *et al.*, 2012). Fetal or neonatal exposure to nicotine was found to induce apoptosis in rat ovary granulosa cells (Petrik *et al.*, 2009). The morphology and functional integrity of the oviducts and uterus are evidently estrogen dependent. Estrogen

plays key roles in the development and maintenance of normal sexual and reproductive functions (Heldring *et al.*, 2007). The biological effects of 17β-estradiol (E_2) are mediated through activation of estrogen receptors (ERs), a ligand-dependent transcription factor belonging to the nuclear hormone receptor super-family (Shao *et al.*, 2012). In rodents and mammals, ERalpha is the predominant ER subtype in the fallopian tubes and uterus and plays a crucial role in physiological processes of the female reproductive tract (Wang *et al.*, 2000; Shao *et al.*, 2012). Thus alteration in expression of ERalpha may be associated with both function and morphology of the uterus and oviducts. Previous studies reported that both smoking (Sanders *et al.*, 2002; Dechanet *et al.*, 2011) and nicotine alone reduced the estradiol level (Petrik *et al.*, 2009).

It is well known that melatonin, a pineal hormone, plays a key role in regulating several reproductive processes (Tamura *et al.*, 2009). It is a powerful antioxidant and indirect free radical scavenger which can detoxify both reactive oxygen and reactive nitrogen species and stimulates antioxidant enzymes (Tamura *et al.*, 2009). Melatonin receptors have been detected in the female reproductive tract including granulosa cells, corpus luteum and

Correspondence address:

Dr. Fahimeh Mohammadghasemi

Cellular & Molecular Research Center,

Faculty of Medicine, Rasht-Tehran Road, Rasht-Iran

TEL.: +98-9125153436 • E-MAIL: parsahistolab@gmail.com

myometrium (Tamura *et al.*, 2009). Melatonin controls the growth of cells through modulation of estrogen and progesterone receptors and has a direct effect on the cell cycle, cell differentiation and gap junction (Abd-Allah *et al.*, 2003; Garcia-Navarro *et al.*, 2007). It regulates the expression of sex steroid receptors in female reproductive tissues (Chuffa *et al.*, 2013). It inhibits apoptosis (Ghasemi *et al.*, 2010) and affects steroidogenesis through melatonin MT1 and MT2 receptors in the female reproductive tract (Woo *et al.*, 2001). Under treatment with nicotine, exogenous melatonin was found to exert a protective function on the ovary (Mohammadghasemi *et al.*, 2012). Most of the previous studies evaluated the effect of cigarette smoking on female fertility, yet little is known about the effect of nicotine on the endometrium or oviduct.

The aim of this study was to investigate the protective effect of simultaneous administration of a low dose of 10 µg melatonin on the uterus and oviduct in mice under chronic treatment with 40 µg/kg nicotine, one of the most important ingredients of cigarettes.

Materials and methods

Animals and treatment

Female adult NMRI mice (35–45 g) were purchased from Razi Institute, Karaj-Iran. All animals were housed in groups of eight to ten in cages under standard lighting conditions and with free access to water and food at 25°C. The animals were maintained and handled according to the protocols approved by the Guilan University of Medical Sciences Animal Care and Use Committee. Initially, the animals were randomly divided into four groups. The first group: control animals treated with normal saline, the second group: animals were injected with nicotine 40 µg/kg (Sigma, USA). The third group: animals were injected with melatonin (Sigma, USA), 10 µg. The fourth group: animals were injected with nicotine 40 µg/kg and melatonin 10 µg. In all groups the animals were injected over 15 days. All injections were performed intraperitoneally.

Melatonin was dissolved in 95% ethanol and 0.9% NaCl (1:7v/v) and was administered between 5.00–6.30 pm. After the melatonin and nicotine treatment period, all animals were monitored by vaginal smears. The estrous cycle was characterized by four phases: proestrus with numerous nucleated epithelial cells, some squamous epithelial cells and few leukocytes, estrus with many clusters of squamous epithelial cells, metestrus with some nucleated and squamous epithelial cells and abundant leukocytes, and diestrus with few cells and presence of thick mucus.

Animals in the estrus phase were chosen and placed in 4 groups, each comprising 8 mice. On day 16, all animals were dissected and their blood samples were collected. Their uterus (part nearer to the ovary) and oviducts were removed. Tissue samples were fixed in 10% neutral buffered formalin and were processed routinely for histological studies. Then 5-µm sections were prepared and stained

with H&E or for immunohistochemical assessments to detect apoptosis and ERalpha luminal epithelial cells.

Histologic study

In each animal 2–3 slides and in each slide 5 microscopic fields were observed using a light microscope (Olympus Japan) with a magnification of 400×. The numbers of endometrial glands in the uterus or mucosal folds in the oviduct were counted.

Hormone measurement

Blood samples were collected through the inferior vena cava immediately after sacrificing the mice. The serum was separated and stored at –80°C. Estradiol levels were measured using an enzyme linked immunosorbent assay (ELISA) kit according to the manufacturer's instructions (Monobind, USA). Serum references (25 µL) were dispensed into the wells. After adding the estradiol biotin reagent (50 µL) into the wells, microplates were swirled, covered and incubated for 30 minutes at room temperature. In the next step, estradiol enzyme reagent (50 µL) was added to each well and swirled, covered and incubated for 90 minutes at room temperature. After discarding the contents of the microplates, 350 µL wash buffer was added and this was repeated three times. A dose of 100 µL substrate solution was added to the wells and incubated at room temperature for 20 minutes. Finally, stop solution (50 µL) was added to each well for stopping the enzymatic reaction and then the absorbance of each well was read at 450 nm.

Detection of ERalpha

Sections were dewaxed and rehydrated. Deparaffinization was carried out in xylene and graded ethanols. Endogenous peroxidase was blocked by incubation in 5% H₂O₂ in methanol for 15 min. Heat-mediated antigen retrieval was performed by microwaving three times for 5 min at 500 W in Citra-Plus solution (Biogenex; San Ramon, Ca) for ER staining. Unspecific bindings were blocked using the biotin blocking system (Dako; Carpinteria, Ca). Incubation was carried out with the mouse monoclonal antibody 1D5, dilution 1:200 (Dako), 1h at room temperature. Sections were then counterstained with hematoxylin, dehydrated, and observed under a light microscope. Cells with a brown nucleus revealed the presence of ERalpha. Cells with a blue nucleus were considered negative for the presence of ERalpha. In each animal, 2 slides and in each slide 8–10 fields with an area of 1×1 mm² were studied. In each field the number of ERalpha positive cells were counted and then divided by numbers of both positive and negative cells and expressed in percentages.

Detection of apoptotic cells

In situ detection of cells with DNA strand breaks was performed in formalin-fixed, paraffin-embedded tissue sections by terminal deoxynucleotidyl transferase dUTP nick-end labeling (TUNEL) according to the manufacturer's instructions (Roche, Germany), as described previously (Ghasemi *et al.*, 2010). Cells with a

dark-brown nucleolus were considered apoptotic. In each animal 2 slides and in each slide 8–10 fields with an area of $1 \times 1 \text{ mm}^2$ were studied. In each field the number of positive apoptotic cells was counted and then divided by numbers of both positive and negative cells and expressed in percentages.

Statistical analysis

Data analyses were performed using SPSS version 13.0 for windows microsoft year 2010. The normality distribution of samples was tested using the Kolmogorov-Smirnov test. Then the data were analyzed by analysis of variance (ANOVA) and Tukey *post-hoc* tests. The value $p < 0.05$ was considered evidence for statistical significance.

Results

Histological assessment

Nicotine induced morphological alterations in both the uterus endometrium and oviduct mucosa. The mean number of endometrial glands in the nicotine treated group was 6.4 ± 6.2 vs 14.2 ± 4.1 in the controls ($p < 0.05$). Nicotine reduced significantly both endometrial glands and mucosal folds of the oviducts compared with the controls ($p < 0.05$). Co-administration of nicotine-melatonin significantly increased the number of endometrial glands compared with the nicotine group ($p < 0.05$) (Figures 1–2 and Table 1). The number of mucosal folds in the oviducts of the co-administered group was increased compared with the nicotine group, yet this value was not significant (Table 1).

Serum estradiol (E2) level and detection of ERalpha

Administration of nicotine in the dose of $40 \mu\text{g/kg}$ for 15 days reduced significantly the serum estradiol (E2) level and ERalpha in epithelial cells of the uterus and oviducts compared with the controls ($p < 0.05$). Melatonin alone did not affect these parameters. However, co-administration of melatonin and nicotine increased significantly the serum estradiol (E2) level and ER alpha in epithelial cells of the uterus and oviducts compared with the nicotine group ($p < 0.05$) (Table 1, Figures 3–4).

Detection of apoptosis

A few apoptotic cells were scattered in the luminal or glandular epithelium of the oviducts and uterus in controls. The percentage of apoptotic cells was significantly

increased both in the uterus and oviducts in the nicotine treated group compared to controls ($p < 0.05$). The nicotine-melatonin combination significantly reduced apoptosis in epithelial cells of the uterus and oviducts compared with the nicotine alone group ($p < 0.05$) (Figure 5).

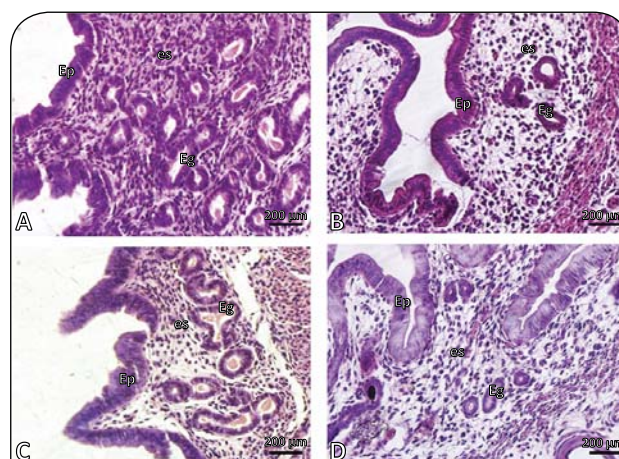


Figure 1: photomicrograph of mouse endometrium. **A:** control, **B:** nicotine, **C:** melatonin and **D:** melatonin+nicotine treated mice. EP: epithelium, es: estroma, Eg: endometrial glands. H&E. Magnification 400x.

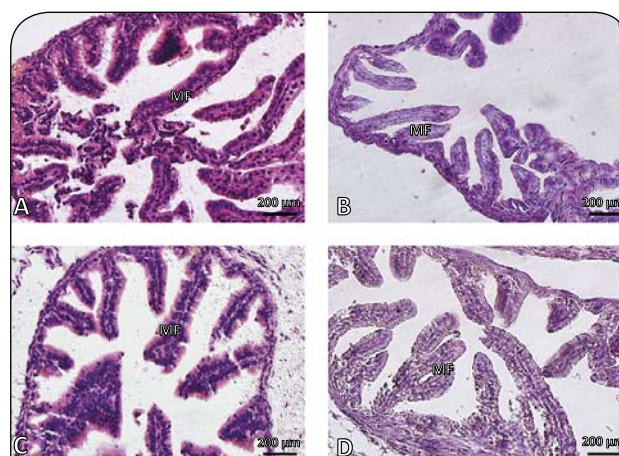


Figure 2: photomicrograph of mouse oviduct. **A:** control, **B:** nicotine, **C:** melatonin and **D:** melatonin+nicotine treated mice. MF: mucosal folds. H&E. Magnification 400x.

Table 1. Effect of nicotine and melatonin on adult mouse uterus and oviduct.

O. folds Numbers/field	E. glands Numbers/field	ERalpha oviduct/field	ERalpha uterus/field	Estradiol level (pg/ml)	Groups
18.2 ± 3.4	14.2 ± 4.1	11.00 ± 2.20^b	15.25 ± 1.46^b	57.25 ± 4.43^b	Control
10.8 ± 2.4^a	6.4 ± 6.2^{ab}	4.25 ± 1.03^a	10.56 ± 1.63^a	41.37 ± 3.70^a	Nicotine
16.3 ± 3.1	12.1 ± 3.0^b	13.00 ± 2.44^b	12.25 ± 1.05^b	53.25 ± 5.14^b	Melatonin
15.2 ± 4.0	10.6 ± 2.8^b	7.66 ± 2.53^{ab}	13.85 ± 0.64^b	50.62 ± 3.96^{ab}	Nicotine+melatonin

Data are expressed as Mean \pm S.D.; a: significant from controls $p < 0.05$; b: significant from nicotine group $p < 0.05$; E: Endometrial; O: Oviduct

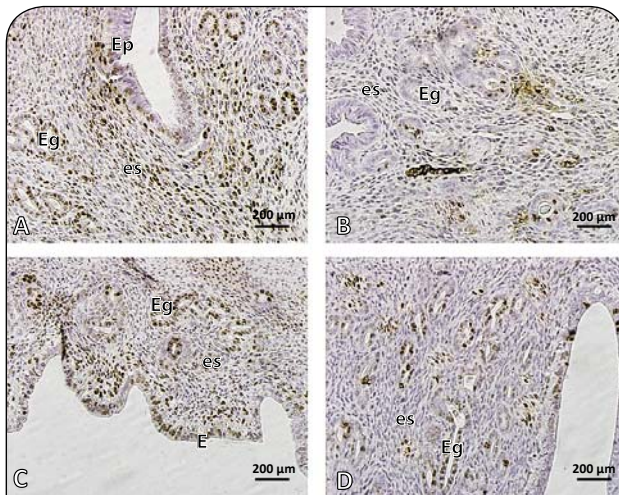


Figure 3. photomicrograph of mouse endometrium. **A:** control, **B:** nicotine, **C:** melatonin and **D:** melatonin+nicotine treated mice. Brown cells show ER alpha positive cells. Arrows show endometrial glands. Note the reduced numbers of ER alpha positive cells and endometrial glands in nicotine (**B**) compared with control (**A**). In **D**, melatonin ameliorated the endometrium and increased ERα. EP: epithelium, es: estroma, Eg: endometrial glands. Magnification 400x.

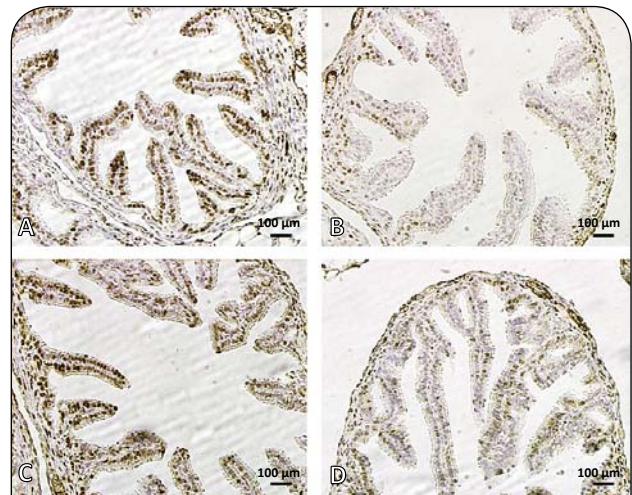


Figure 4. photomicrograph of mouse ampulla (oviduct). **A:** control, **B:** nicotine treated mouse, **C:** melatonin treated mouse and **D:** melatonin+nicotine treated mouse. Brown cells show ER alpha positive cells. Note the reduced numbers of ER alpha positive cells and mucosal folds (MF) in nicotine (**B**) compared with control (**A**). In **D**, melatonin ameliorated the mucosal folds of the oviduct and increased ER alpha. ER alpha Immunostaining. Magnification 400x.

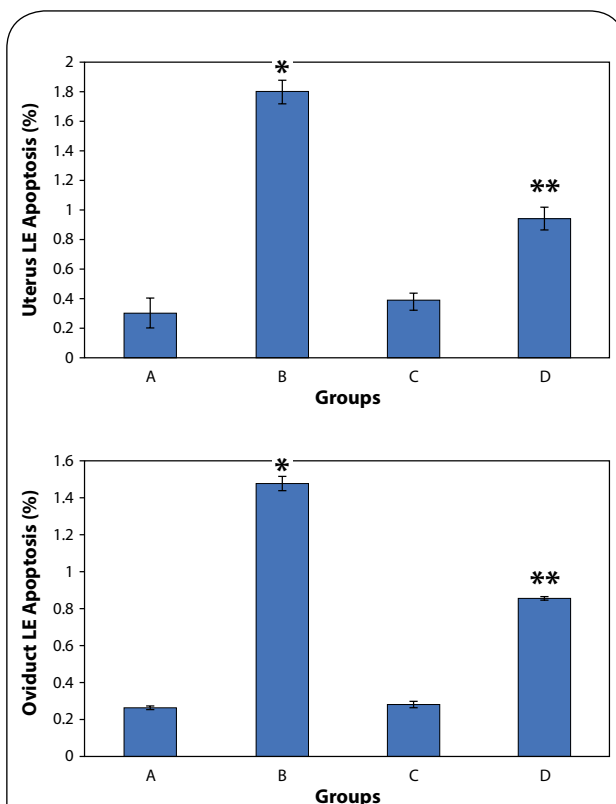


Figure 5. Effect of nicotine and melatonin on apoptosis in luminal epithelium (LE) in mouse uterus and oviduct. **A:** control, **B:** nicotine, **C:** melatonin, **D:** melatonin+nicotine treated groups. Data are expressed as Mean \pm SD. * shows significant data from controls (A), $p < 0.05$. ** shows significant data from both controls (A) and nicotine alone treated group (B), $p < 0.05$.

Discussion

In this study, melatonin was found to exert protective effects on the uterus and oviduct in mice under treatment with nicotine. Nicotine administration was shown to be associated with a reduction in estradiol level and ERalpha numbers and it increased apoptosis both in the uterus and oviduct in mice.

Apoptosis is programmed physiological cell death that occurs in all types of cells in both embryonic and adult periods (Petrik *et al.*, 2009). Due to the cyclic nature of the female reproductive system, the ovary, the endometrium and the mammary gland sustain continuous cycles of cell growth and apoptosis in response to hormonal changes (Meresman, 2011). Apoptotic mechanisms exploited by nicotine include alteration of the bcl_2/bax ratio and activation of the caspase-3 pathway (Petrik *et al.*, 2009). In this study, nicotine was found to induce an increase in the number of apoptotic cells in the epithelium of the uterus and oviduct. The increased level of apoptosis in the luminal epithelium of the uterus and oviduct is presumably due to a reduced level of estradiol and its receptor, as reported previously (Petrik *et al.*, 2009; Wang *et al.*, 2000). Our study showed that co-administration of melatonin-nicotine reduced apoptotic cells in luminal epithelial cells in the uterus and oviducts. Similarly, an antiapoptotic effect of melatonin was demonstrated in different tissues (Guneli *et al.*, 2008; Take *et al.*, 2009). The mechanisms related to antiapoptotic effects of melatonin include: bcl_2 expression by mitochondrial pathways and reduction of caspase-3 activity (Tamura *et al.*, 2009), antioxidative effect of melatonin, alteration in cell differentiation,

growth factors, cell division and cell attachments (Garcia-Navarro *et al.*, 2007), which were however not evaluated in the present study. A further study with focus on molecular mechanisms of apoptosis and interaction between melatonin receptors, estrogen receptors and nicotine acetylcholine receptors following treatment with nicotine and melatonin is therefore suggested.

Our study showed that nicotine reduced estradiol levels. Estrogen is primarily produced by preovulatory follicles under the influence of FSH in the rodent ovary (Byers *et al.*, 1997; Chuffa *et al.*, 2013). Estrogen has various intra-ovarian roles during folliculogenesis. In granulosa cells of maturing follicles, estradiol has little effect alone but is required for maximum FSH stimulation of estradiol synthesis, LH receptor expression, LH responsiveness, antrum formation, gap junction formation, and prevention of atresia (Emmen *et al.*, 2005). Smokers show abnormal endocrine profiles of testosterone, FSH, LH and estradiol levels (Dechanet *et al.*, 2011). Epidemiologic studies reported that women who smoke had lower serum estrogen levels than nonsmokers (Barbieri *et al.*, 2005). Increased estrogen hepatic metabolism and decreased estrogen synthesis are the probable mechanisms for the antiestrogenic effect of cigarette smoking (Michnovicz *et al.*, 1986). In this study, the decreased estrogen level in the nicotine group can probably be explained by its toxic effects on the ovary or granulosa cell function (Mohammadghasemi *et al.*, 2012). However, Sanders *et al.* (2002) did not find any changes in estradiol levels of the bovine theca interna and granulosa cells following nicotine administration. In contrast, Gocze *et al.* (1997) and Bodies *et al.* (1997) observed a slight increase in estradiol production by human granulosa cells treated with nicotine. One reason for these conflicting results may be due to species differences. Further reasons could include the source of cells and the length of culture period, variation in the form of the nicotine preparations used, as well as nicotine dosage and duration of nicotine exposure (Sanders *et al.*, 2002).

In our study, ERalpha was reduced in the epithelial tissue of both the uterus and oviduct in nicotine treated animals. Steroid hormone action is mediated via nuclear receptor proteins ERalpha and ERbeta, which function as ligand modulated transcription factors. In mammals and rodents, the activity of ERalpha is regulated by cycling hormone levels (Wang *et al.*, 2000). E2 was found to induce increased concentrations of both ER alpha and progesterone receptor (Wang *et al.*, 2000). The lowered level of estradiol in this study reduced presumably the numbers of ERalpha. E2 was shown to enhance ER alpha mRNA synthesis in the rat uterus 24 h after injection and the uterine responses to E2 and progesterone are directly or indirectly mediated by the cell specific expression of their receptors (Wang *et al.*, 1999).

Our study showed that co-administration of melatonin-nicotine increased both the estradiol level and ER alpha, compared with the group that received nicotine alone. Melatonin has specific receptors MT1 and MT2 both in the uterus and oviduct (Tamura *et al.*, 2009).

Depending on the tissue, organ and species, melatonin activates different second messenger cascades by interacting with the same receptor subtype (Tamura *et al.*, 2009). Such alteration in the co-administered group may be due either to the direct effect of melatonin on both uterine and oviduct tissue or to the effect of melatonin on the hypothalamo-pituitary-gonadal axis (HPG). Melatonin interacts with estrogen-signaling pathways through indirect neuroendocrine mechanisms, direct actions at the tumor cell level, and regulation of enzymes involved in the biosynthesis of estrogens (Yoo & Jeung, 2009). It influences sex steroid production at different stages of ovarian follicular maturation (Adriaens *et al.*, 2006). There are controversial results about the effect of melatonin on sex hormones. Melatonin treatment increases mRNA expression of LH but not FSH receptors in human granulosa cells (Tamura *et al.*, 2009). Melatonin increases the production of progesterone and androgen in porcine antral follicles, without effect on the estradiol level (Tanavde & Maitra 2003). However in hamsters, it increases ER activity in the uterus (Danforth *et al.*, 1983) and decreases the production of progesterone and estradiol (Tamura *et al.*, 2009). Abd-Allah *et al.* (2003) and Chuffa *et al.* (2013) found reduced numbers of ER in the rat uterus after administration of melatonin. Similarly, melatonin increases calbindin families of calcium-binding proteins expression through ERalpha. These conflicts are due to the cell type, dosage and duration of melatonin treatment, experimental model, and species (Tamura *et al.*, 2009).

Our study showed co-administration of nicotine-melatonin reduced apoptosis and increased ER alpha compared to nicotine alone. These alterations probably suggest a functional link between increased cell survival and the up-regulation of ERalpha by melatonin induced ERalpha during nicotine-mediated cell death. In this regard, it has been shown that melatonin increases survival of rat pituitary GH3 cells against cell death mediated by H₂O₂ through ERalpha (Yoo & Jeung, 2009). Estrogen receptor alpha in other tissues also protects podocytes against apoptosis in vitro or in vivo (Kummer *et al.*, 2011).

In conclusion, this study indicates that melatonin exerts a favorable effect on the uterus and oviduct in mice treated with nicotine through reduction of apoptosis and modification in ERalpha in the luminal epithelium of the uterus and oviduct. Our results also suggest that melatonin may have a significant beneficial effect for clinical applications and subfertility or infertility induced by smoking or nicotine replacement therapy in women. Future studies on the current topic in humans are therefore recommended.

REFERENCES

- Abd-Allah AR, El-Sayed el SM, Abdel-Wahab MH, Hamada FM. (2003). Effect of melatonin on estrogen and progesterone receptors in relation to uterine contraction in rats. *Pharmacol Res* 47: 349–354.
- Adriaens I, Jacquet P, Cortvrindt R, Janssen K, Smits J. (2006). Melatonin has dose-dependent effects on folliculogenesis, oocyte maturation capacity and steroidogenesis. *Toxicology* 228: 333–343.

- Barbieri RL, Sluss PM, Powers RD, McShane PM, Vitonis A, Ginsburg E, Cramer DC. (2005). Association of body mass index, age, and cigarette smoking with serum testosterone levels in cycling women undergoing in vitro fertilization. *Fertil Steril* **83**: 302–308.
- Bodis J, Hanf V, Torok A, Tinneberg HR, Borsay P, Szabo I. (1997). Influence of nicotine on progesterone and estradiol production of cultured human granulosa cells. *Early Pregnancy* **3**: 34–37.
- Byers M, Kuiper GG, Gustafsson JA, Park-Sarge OK. (1997). Estrogen receptor-beta mRNA expression in rat ovary: down-regulation by gonadotropins. *Mol Endocrinol* **11**: 172–182.
- Chuffa LG, Seiva FR, Favaro WJ, Amorim JP, Teixeira GR, Mendes LO, Fioruci-Fontanelli BA, Pinheiro PF, Martinez M, Martinez FE. (2013). Melatonin and ethanol intake exert opposite effects on circulating estradiol and progesterone and differentially regulate sex steroid receptors in the ovaries, oviducts, and uteri of adult rats. *Reprod Toxicol* **39**: 40–49.
- Danforth DN, Jr., Tamarkin L, Do R, Lippman ME. (1983). Melatonin-induced increase in cytoplasmic estrogen receptor activity in hamster uteri. *Endocrinology* **113**: 81–85.
- Dechanet C, Anahory T, Mathieu Daude JC, Quantin X, Reyftmann L, Hamamah S, Hedon B, Dechaud H. (2011). Effects of cigarette smoking on reproduction. *Hum Reprod Update* **17**: 76–95.
- Emmen JM, Couse JF, Elmore SA, Yates MM, Kissling GE, Korach KS. (2005). In vitro growth and ovulation of follicles from ovaries of estrogen receptor (ER){alpha} and ER{beta} null mice indicate a role for ER{beta} in follicular maturation. *Endocrinology* **146**: 2817–2826.
- Garcia-Navarro A, Gonzalez-Puga C, Escames G, Lopez LC, Lopez A, Lopez-Cantarero M, Camacho E, Espinosa A, Gallo MA, Acuna-Castroviejo D. (2007). Cellular mechanisms involved in the melatonin inhibition of HT-29 human colon cancer cell proliferation in culture. *J Pineal Res* **43**: 195–205.
- Ghasemi F, Faghani M, Khajehjahromi S, Bahadori M, Nasiri E, Hemadi M. (2010). Effect of Melatonin on proliferative activity and apoptosis in spermatogenic cells in mouse under chemotherapy. *Journal of Reproduction & contraception* **21**: 79–94.
- Gocze PM, Szabo I, Freeman DA. (1999). Influence of nicotine, cotinine, anabasine and cigarette smoke extract on human granulosa cell progesterone and estradiol synthesis. *Gynecol Endocrinol* **13**: 266–272.
- Guneli E, Tugyan K, Ozturk H, Gumustekin M, Cilaker S, Uysal N. (2008). Effect of melatonin on testicular damage in streptozotocin-induced diabetes rats. *Eur Surg Res* **40**: 354–360.
- Heldring N, Pike A, Andersson S. (2007). Estrogen receptors: how do they signal and what are their targets. *Physiol Rev* **87**: 905–931.
- Kummer S, Jeruschke S, Wegerich LV, Peters A, Lehmann P, Seibt A, Mueller F, Koleganova N, Halbenz E, Schmitt CP, Bettendorf M, Mayatepek E, Gross-Weissmann ML, Oh J. (2011). Estrogen receptor alpha expression in podocytes mediates protection against apoptosis in-vitro and in-vivo. *PLoS One* **6**: e27457.
- Meresman G. (2011). Relevance of apoptosis in the female reproductive system. *Invest Clin* **52**: 274–290.
- Michnovicz JJ, Hershcopf RJ, Naganuma H, Bradlow HL, Fishman J. (1986). Increased 2-hydroxylation of estradiol as a possible mechanism for the anti-estrogenic effect of cigarette smoking. *N Engl J Med* **315**: 1305–1309.
- Mohammadghasemi F, Jahromi SK, Hajizadeh H, Homafar MA, Saadat N. (2012). The protective effects of exogenous melatonin on nicotine-induced changes in mouse ovarian follicles. *J Reprod Infertil* **13**: 143–150.
- Petrik JJ, Gerstein HC, Cesta CE, Kellenberger LD, Alfaidy N, Holloway AC. (2009). Effects of rosiglitazone on ovarian function and fertility in animals with reduced fertility following fetal and neonatal exposure to nicotine. *Endocrine* **36**: 281–290.
- Sanders SR, Cuneo SP, Turzillo AM. (2002). Effects of nicotine and cotinine on bovine theca interna and granulosa cells. *Reprod Toxicol* **16**: 795–800.
- Shao R, Feng Y, Zou S, Weijdegard B, Wu G, Brannstrom M, Billig H. (2012). The role of estrogen in the pathophysiology of tubal ectopic pregnancy. *Am J Transl Res* **4**: 269–278.
- Take G, Erdogan D, Helvacioğlu F, Goktas G, Ozbey G, Uluoglu C, Yucel B, Guney Y, Hicsonmez A, Ozkan S. (2009). Effect of melatonin and time of administration on irradiation-induced damage to rat testes. *Braz J Med Biol Res* **42**: 621–628.
- Tamura H, Nakamura Y, Korkmaz A, Manchester LC, Tan DX, Sugino N, Reiter RJ. (2009). Melatonin and the ovary: physiological and pathophysiological implications. *Fertil Steril* **92**: 328–343.
- Tanavde VS, Maitra A. (2003). In vitro modulation of steroidogenesis and gene expression by melatonin: a study with porcine antral follicles. *Endocr Res* **29**: 399–410.
- Tuttle AM, Stampfli M, Foster WG. (2009). Cigarette smoke causes follicle loss in mice ovaries at concentrations representative of human exposure. *Hum Reprod* **24**: 1452–1459.
- Wang H, Eriksson H, Sahlin L. (2000). Estrogen receptors alpha and beta in the female reproductive tract of the rat during the estrous cycle. *Biol Reprod* **63**: 1331–1340.
- Wang H, Masironi B, Eriksson H, Sahlin L. (1999). A comparative study of estrogen receptors alpha and beta in the rat uterus. *Biol Reprod* **61**: 955–964.
- Woo MM, Tai CJ, Kang SK, Nathwani PS, Pang SF, Leung PC. (2001). Direct action of melatonin in human granulosa-luteal cells. *J Clin Endocrinol Metab* **86**: 4789–4797.
- Yoo YM, Jeung EB. (2009). Melatonin-induced estrogen receptor alpha-mediated calbindin-D9k expression plays a role in H2O2-mediated cell death in rat pituitary GH3 cells. *J Pineal Res* **47**: 301–307.